

## SDCBP Antibody

Catalog No: #42808

Orders: [order@signalwayantibody.com](mailto:order@signalwayantibody.com)Support: [tech@signalwayantibody.com](mailto:tech@signalwayantibody.com)

## Description

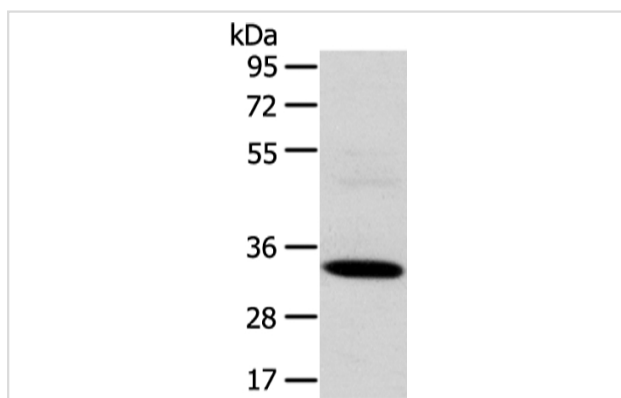
Product Name	SDCBP Antibody
Host Species	Rabbit
Clonality	Polyclonal
Purification	Antigen affinity purification.
Applications	WB IHC
Species Reactivity	Hu
Specificity	The antibody detects endogenous levels of total SDCBP protein.
Immunogen Type	protein
Immunogen Description	Full length fusion protein of human SDCBP
Target Name	SDCBP
Other Names	ST1; MDA9; SYCL; MDA-9; TACIP18
Accession No.	Swiss-Prot#: O00560Gene ID: 6386
Uniprot	O00560
GeneID	6386;
Calculated MW	32kd
Concentration	2.2mg/ml
Formulation	Rabbit IgG in pH7.4 PBS, 0.05% NaN <sub>3</sub> , 40% Glycerol.
Storage	Store at -20°C

## Application Details

Western blotting: 1:500-1:2000

Immunohistochemistry: 1:25-1:100

## Images



Gel: 8%SDS-PAGE

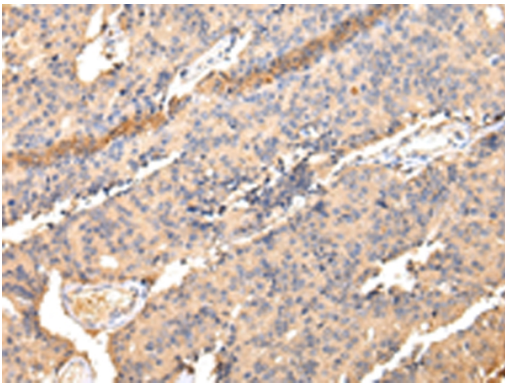
Lysate: 40 µg

Lane: HeLa cell

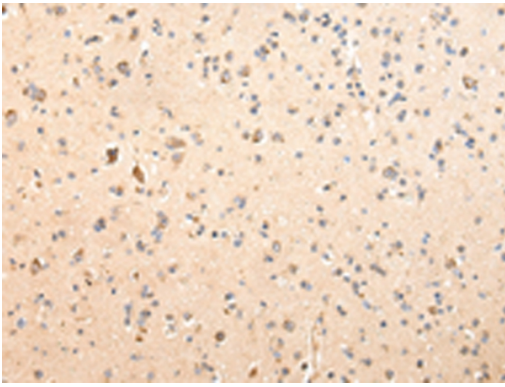
Primary antibody: 1/500 dilution

Secondary antibody: Goat anti rabbit IgG at 1/8000 dilution

Exposure time: 3 seconds



Immunohistochemical analysis of paraffin-embedded Human prostate cancer tissue using #42808 at dilution 1/40.



Immunohistochemical analysis of paraffin-embedded Human brain tissue using #42808 at dilution 1/40.

## Background

The protein encoded by this gene was initially identified as a molecule linking syndecan-mediated signaling to the cytoskeleton. The syntenin protein contains tandemly repeated PDZ domains that bind the cytoplasmic, C-terminal domains of a variety of transmembrane proteins. This protein may also affect cytoskeletal-membrane organization, cell adhesion, protein trafficking, and the activation of transcription factors. The protein is primarily localized to membrane-associated adherens junctions and focal adhesions but is also found at the endoplasmic reticulum and nucleus.?

Note: This product is for in vitro research use only