

ALDH3A2 Antibody

Catalog No: #42809

Orders: order@signalwayantibody.comSupport: tech@signalwayantibody.com

Description

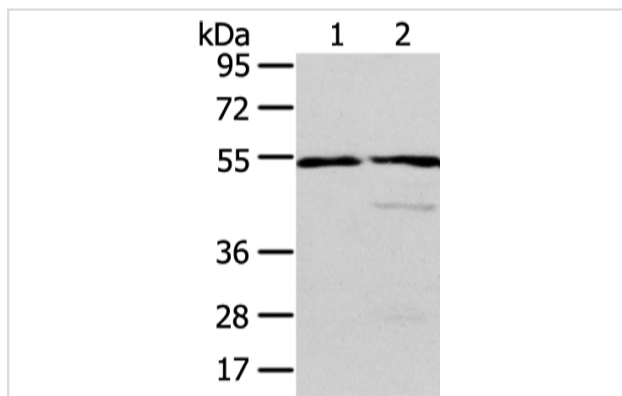
Product Name	ALDH3A2 Antibody
Host Species	Rabbit
Clonality	Polyclonal
Purification	Antigen affinity purification.
Applications	WB IHC
Species Reactivity	Hu
Specificity	The antibody detects endogenous levels of total ALDH3A2 protein.
Immunogen Type	protein
Immunogen Description	Fusion protein of human ALDH3A2
Target Name	ALDH3A2
Other Names	SLS; FALDH; ALDH10
Accession No.	Swiss-Prot#: P51648Gene ID: 224
Uniprot	P51648
GeneID	224;
Calculated MW	55kd
Concentration	1.1mg/ml
Formulation	Rabbit IgG in pH7.4 PBS, 0.05% NaN ₃ , 40% Glycerol.
Storage	Store at -20°C

Application Details

Western blotting: 1:500-1:2000

Immunohistochemistry: 1:20-1:100

Images



Gel: 6%SDS-PAGE

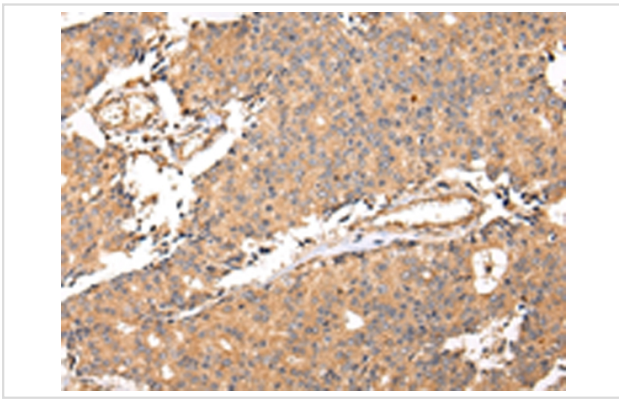
Lysate: 40 µg

Lane 1-2: Human normal liver and fetal liver tissue

Primary antibody: 1/250 dilution

Secondary antibody: Goat anti rabbit IgG at 1/8000 dilution

Exposure time: 10 seconds



Immunohistochemical analysis of paraffin-embedded Human prostate cancer tissue using #42809 at dilution 1/20,

Background

Aldehyde dehydrogenase isozymes are thought to play a major role in the detoxification of aldehydes generated by alcohol metabolism and lipid peroxidation. This gene product catalyzes the oxidation of long-chain aliphatic aldehydes to fatty acid. Mutations in the gene cause Sjogren-Larsson syndrome. Alternatively spliced transcript variants encoding different isoforms have been found for this gene.

Note: This product is for in vitro research use only