

UQCRC1 Antibody

Catalog No: #42814

Orders: order@signalwayantibody.com

Support: tech@signalwayantibody.com

Description

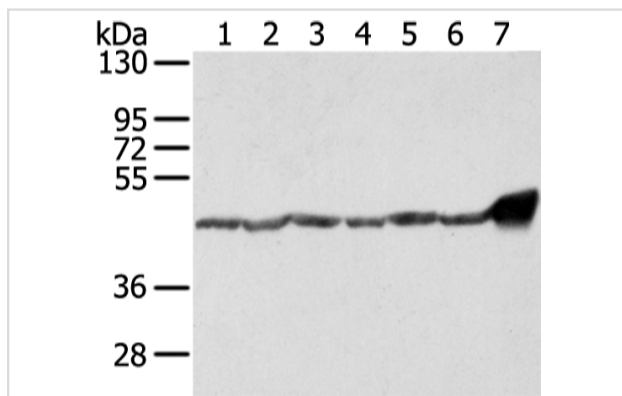
Product Name	UQCRC1 Antibody
Host Species	Rabbit
Clonality	Polyclonal
Purification	Antigen affinity purification.
Applications	WB IHC
Species Reactivity	Hu
Specificity	The antibody detects endogenous levels of total UQCRC1 protein.
Immunogen Type	protein
Immunogen Description	Fusion protein of human UQCRC1
Target Name	UQCRC1
Other Names	QCR1; UQCR1; D3S3191
Accession No.	Swiss-Prot#: P31930 Gene ID: 7384
Uniprot	P31930
GeneID	7384;
Calculated MW	53kd
Concentration	2mg/ml
Formulation	Rabbit IgG in pH7.4 PBS, 0.05% NaN ₃ , 40% Glycerol.
Storage	Store at -20°C

Application Details

Western blotting: 1:500-1:2000

Immunohistochemistry: 1:25-1:100

Images



Gel: 8%SDS-PAGE

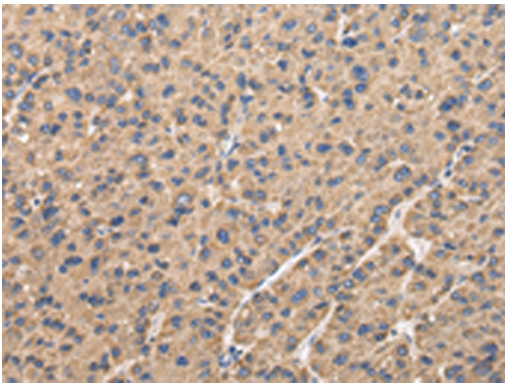
Lysate: 40 µg

Lane 1-7: 293T, hela and A431 cell, human fetal brain tissue and 231 cell, lo2 cell and mouse heart tissue

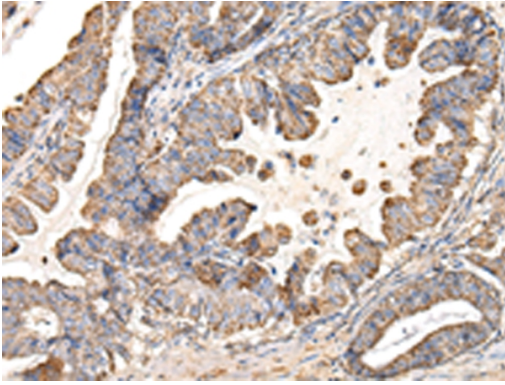
Primary antibody: 1/800 dilution

Secondary antibody: Goat anti rabbit IgG at 1/8000 dilution

Exposure time: 1 second



Immunohistochemical analysis of paraffin-embedded Human liver cancer tissue using #42814 at dilution 1/35.



Immunohistochemical analysis of paraffin-embedded Human esophagus cancer tissue using #42814 at dilution 1/35.

Background

Cytochrome b-c1 complex subunit 1, mitochondrial is a protein that in humans is encoded by the *UQCRC1* gene. This is a component of the ubiquinol-cytochrome c reductase complex (complex III or cytochrome b-c1 complex), which is part of the mitochondrial respiratory chain. This protein may mediate formation of the complex between cytochromes c and c1.

Note: This product is for in vitro research use only