

## UQCRC2 Antibody

Catalog No: #42815

Orders: order@signalwayantibody.com

Support: tech@signalwayantibody.com

## Description

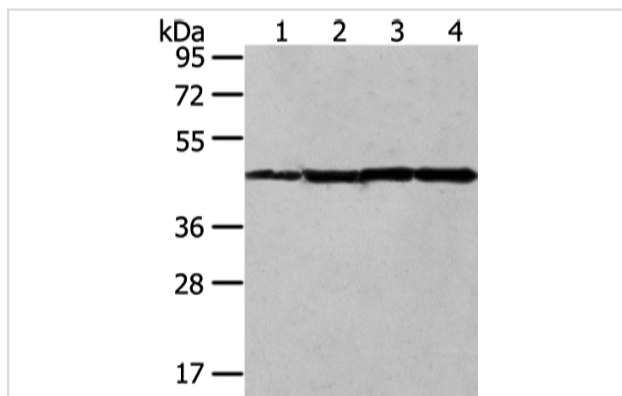
Product Name	UQCRC2 Antibody
Host Species	Rabbit
Clonality	Polyclonal
Purification	Antigen affinity purification.
Applications	WB IHC
Species Reactivity	Hu Ms
Specificity	The antibody detects endogenous levels of total UQCRC2 protein.
Immunogen Type	protein
Immunogen Description	Fusion protein of human UQCRC2
Target Name	UQCRC2
Other Names	QCR2; UQCR2; MC3DN5
Accession No.	Swiss-Prot#: P22695 Gene ID: 7385
Uniprot	P22695
GeneID	7385;
Calculated MW	48kd
Concentration	1.5mg/ml
Formulation	Rabbit IgG in pH7.4 PBS, 0.05% NaN <sub>3</sub> , 40% Glycerol.
Storage	Store at -20°C

## Application Details

Western blotting: 1:1000-1:5000

Immunohistochemistry: 1:25-1:100

## Images



Gel: 8%SDS-PAGE

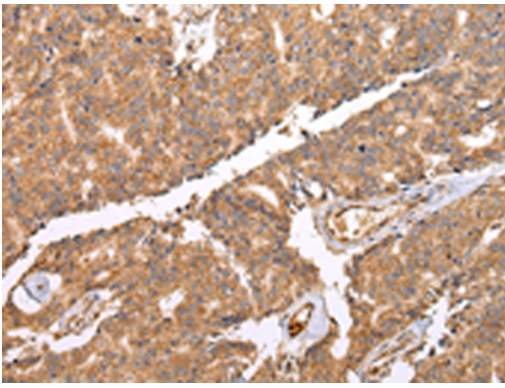
Lysate: 40 µg

Lane 1-4: Mouse muscle tissue and HT-29 cell, A431 and Jurkat cell

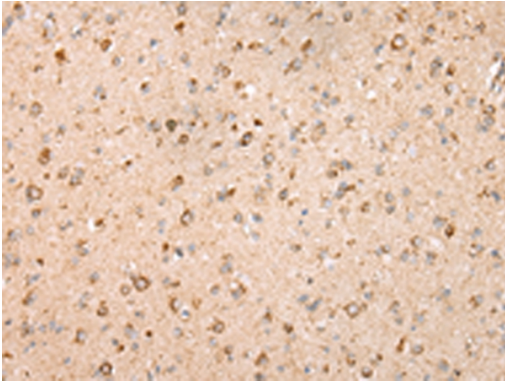
Primary antibody: 1/400 dilution

Secondary antibody: Goat anti rabbit IgG at 1/8000 dilution

Exposure time: 10 seconds



Immunohistochemical analysis of paraffin-embedded Human prostate cancer tissue using #42815 at dilution 1/25.



Immunohistochemical analysis of paraffin-embedded Human brain tissue using #42815 at dilution 1/25.

## Background

This is a component of the ubiquinol-cytochrome c reductase complex (complex III or cytochrome b-c1 complex), which is part of the mitochondrial respiratory chain. The core protein 2 is required for the assembly of the complex.

Note: This product is for in vitro research use only