

CHMP3 Antibody

Catalog No: #42835

Orders: order@signalwayantibody.comSupport: tech@signalwayantibody.com

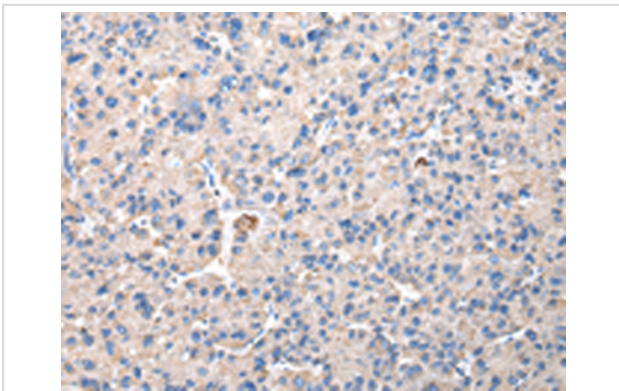
Description

Product Name	CHMP3 Antibody
Host Species	Rabbit
Clonality	Polyclonal
Purification	Antigen affinity purification.
Applications	IHC
Species Reactivity	Hu
Specificity	The antibody detects endogenous levels of total CHMP3 protein.
Immunogen Type	protein
Immunogen Description	Full length fusion protein of human CHMP3
Target Name	CHMP3
Other Names	NEDF; VPS24; CGI-149
Accession No.	Swiss-Prot#: Q9Y3E7 Gene ID: 100526767,51652
Uniprot	Q9Y3E7
GeneID	100526767;51652;
Concentration	1.7mg/ml
Formulation	Rabbit IgG in pH7.4 PBS, 0.05% NaN ₃ , 40% Glycerol.
Storage	Store at -20°C

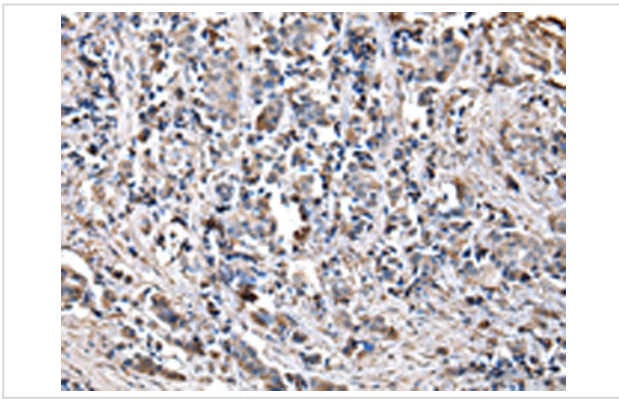
Application Details

Immunohistochemistry: 1:10-1:50

Images



Immunohistochemical analysis of paraffin-embedded Human liver cancer tissue using #42835 at dilution 1/30.



Immunohistochemical analysis of paraffin-embedded Human breast cancer tissue using #42835 at dilution 1/30.

Background

This gene encodes a protein that sorts transmembrane proteins into lysosomes/vacuoles via the multivesicular body (MVB) pathway. This protein, along with other soluble coiled-coil containing proteins, forms part of the ESCRT-III protein complex that binds to the endosomal membrane and recruits additional cofactors for protein sorting into the MVB. This protein may also co-immunoprecipitate with a member of the IFG-binding protein superfamily. Alternative splicing results in multiple transcript variants. Read-through transcription also exists between this gene and the upstream ring finger protein 103 (RNF103) gene.

Note: This product is for in vitro research use only