

# Her2/Neu Antibody

Catalog No: #P1002

Package Size: #P1002-1 0.1ml #P1002-2 1ml

Orders: [order@signalwayantibody.com](mailto:order@signalwayantibody.com)

Support: [tech@signalwayantibody.com](mailto:tech@signalwayantibody.com)

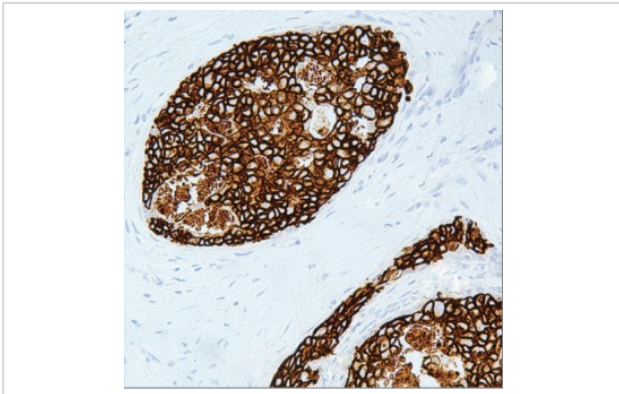
## Description

Product Name	Her2/Neu Antibody
Host Species	Mouse
Clonality	Monoclonal
Clone No.	IHC042
Applications	IHC
Species Reactivity	Human
Formulation	Tris Buffer, pH 7.3 - 7.7, with 1% BSA and
Storage	Store at 2-8C. Do not freeze.

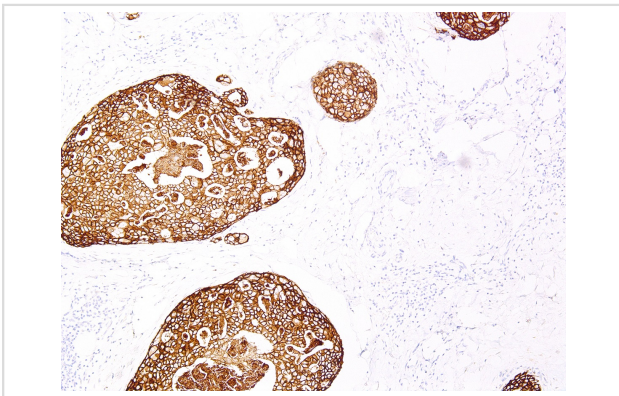
## Application Details

Recommended working dilution range: 1:100 - 1:200

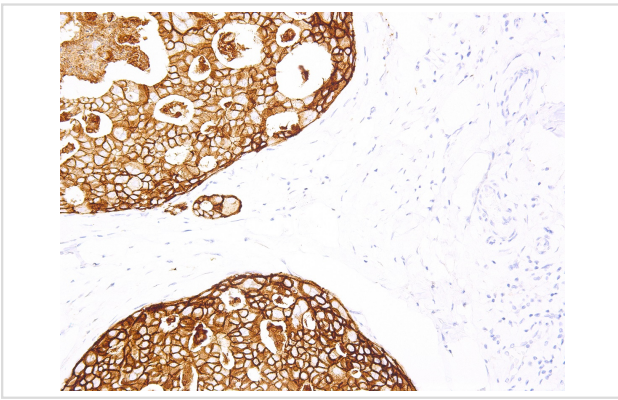
## Images



Her2/Neu Antibody (P1002) on Breast carcinoma



Her2/Neu Antibody (P1002) on Breast - 10X



## Product Description

The Her2/Neu (c-erbB-2) proto-oncogene is a transmembrane receptor tyrosine kinase that is clinically indicated in a number of carcinomas. Overexpression of the c-erbB-2 protein has been associated with ductal breast cancer, as well as pulmonary and gastric adenocarcinomas. A correlation between Her2 and p53 has also been documented, as overexpression of both proteins has been associated with early invasion and metastasis in bladder cancer.

## References

Suthipintawong C, et al. *Diagn Cytopathol.* 1997; 17:127-33. Alexiev BA, et al. *Gen Diagn Pathol.* 1997; 142:271-9. Fernandez Ace?ero MJ, et al. *Gen Diagn Pathol.* 1997; 142:289-96. Koeppen HKW, et al. *Histopathology.* 2001; 38:96-104. Moch H, et al. *Virchows Arch A Pathol Anat Histopathol.* 1993; 423:329-34. Cetin B, et al. *Transl Gastroenterol Hepatol.* 2016; 1:59.

Note: This product is for in vitro research use only