

# Cytokeratin 19 Antibody

Catalog No: #P1008

Package Size: #P1008-1 0.1ml #P1008-2 1ml

Orders: [order@signalwayantibody.com](mailto:order@signalwayantibody.com)

Support: [tech@signalwayantibody.com](mailto:tech@signalwayantibody.com)

## Description

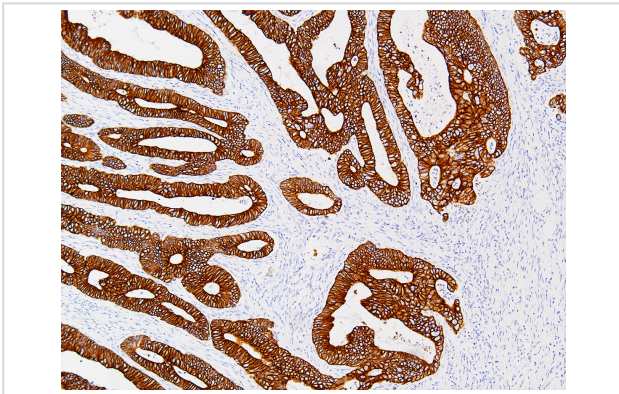
Product Name	Cytokeratin 19 Antibody
Host Species	Mouse
Clonality	Monoclonal
Clone No.	IHC019
Applications	IHC
Species Reactivity	Human
Formulation	Tris Buffer, pH 7.3 - 7.7, with 1% BSA and
Storage	Store at 2-8C. Do not freeze.

## Application Details

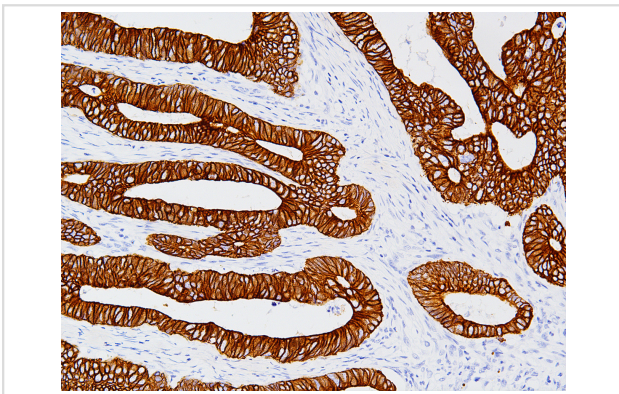
Recommended

working dilution range: 1:100 - 1:200

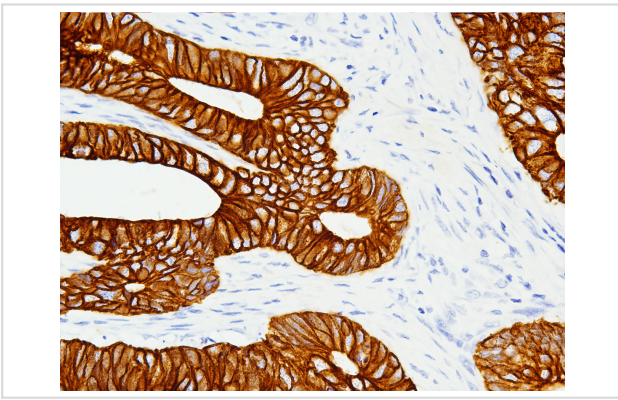
## Images



Cytokeratin 19 Antibody (P1008) on Colon- 10x



Cytokeratin 19 Antibody (P1008) on Colon- 20x



## Product Description

Cytokeratin 19 (CK19) forms intermediate filaments found in the intracytoplasmic cytoskeleton of epithelial tissue and provides mechanical support. Anti-Cytokeratin 19 stains epithelia and epithelial malignancies such as carcinomas of the colon, stomach, pancreas, biliary tract, liver, and breast. Cytokeratin 19 is a useful marker for distinguishing hepatocellular carcinoma from intrahepatic cholangiocarcinoma. This differentiation is improved when stained in combination with Cytokeratin 7, CAM5.2, Ber-EP4/MOC31, HepPar1 and TTF1. Cytokeratin 19 staining can also be used to recognize thyroid papillary carcinomas.

## References

- Jain R, et al. *Appl Immunohistochem Mol Morphol*. 2010; 18:9-15.
- Rosai J. *Tumori*. 2003; 89:517-9.
- de Matos LL, et al. *Diagn Pathol*. 2012; 7:97.

Note: This product is for in vitro research use only