

## Ki-67 Antibody

Catalog No: #P1010

Package Size: #P1010-1 0.1ml #P1010-2 1ml

Orders: [order@signalwayantibody.com](mailto:order@signalwayantibody.com)Support: [tech@signalwayantibody.com](mailto:tech@signalwayantibody.com)

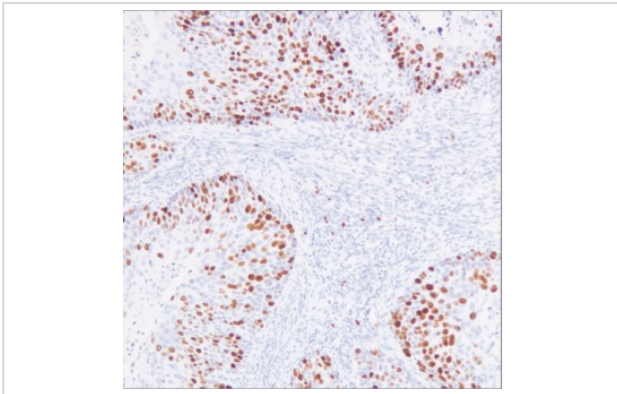
## Description

Product Name	Ki-67 Antibody
Host Species	Mouse
Clonality	Monoclonal
Clone No.	IHC067
Applications	IHC
Species Reactivity	Human
Formulation	Tris Buffer, pH 7.3 - 7.7, with 1% BSA and
Storage	Store at 2-8C. Do not freeze.

## Application Details

Recommended working dilution range:1:100 - 1:200

## Images



Ki-67 Antibody (P1010) on Tonsil tissue

## Product Description

Ki-67 is a nuclear, non-histone protein that is expressed only during active phases of the cell cycle (G1, S, G2 and M), but not in the resting phases (G0 and G1 early phase). Although the antigen has also been associated with ribosomal RNA transcription, it is strongly linked to cell proliferation and has thus been indicated as an effective marker in grading the proliferation rate of tumors, including those of the brain, breast, cervix, and prostate.

## References

Mckeever P, et al. J Neuropathol Exp Neurol. 1998; 57:931-6. Coons SW, et al. Neurosurgery. 1997; 41:878-84. Allegra CJ, et al. J Clin Oncol. 2003; 21:241-50. Pathmanathan N, et al. J Clin Pathol. 2013; 66:512-6. Jansen R, et al. Br J Cancer. 1998; 78:460-65. Goodson WH, et al. Breast Cancer Res Treat. 1998; 49:155-164. Rossi S, et al. Am J Clin Pathol. 2005; 124:295-302. Pena LL, et al. J Vet Diag Invest. 1998; 10:237-46. Gibbons D, et al. Comparison Mod Pathol. 1997; 10:409-13.

---

Note: This product is for in vitro research use only