

Tau Antibody

Catalog No: #P1026

Package Size: #P1026-1 0.1ml #P1026-2 1ml

Orders: order@signalwayantibody.comSupport: tech@signalwayantibody.com

Description

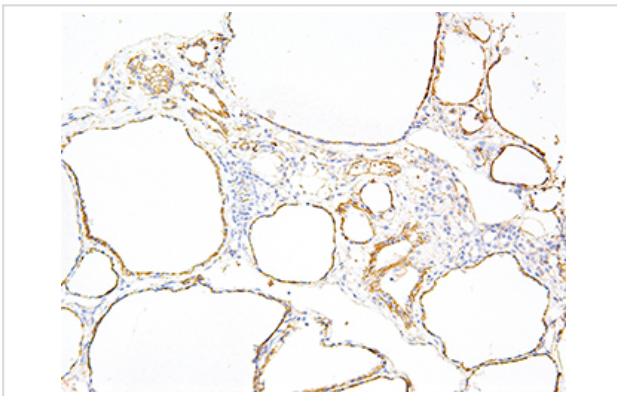
Product Name	Tau Antibody
Host Species	Mouse
Clonality	Monoclonal
Clone No.	IHC696
Applications	IHC
Species Reactivity	Human
Formulation	Tris Buffer, pH 7.3 - 7.7, with 1% BSA and
Storage	Store at 2-8C. Do not freeze.

Application Details

Recommended

working dilution range:1:100 - 1:200

Images



Tau Antibody (P1026) on Thyroid Gland

Product Description

Tau proteins are abundant in neurons of the central nervous system, and function in microtubule stability and organization. Defects in Tau functioning and aggregation of these proteins have been clinically linked to a number of neurodegenerative disorders including Alzheimers disease, Parkinsons disease, Picks disease (PiD), progressive supranuclear palsy (PSP), cortical basal degeneration (CBD), and frontotemporal dementia with parkinsonism linked to chromosome 17 (FTDP-17).

References

- Nuobo G, et al. *Ann Diagn Pathol.* 2017; 25:24-9.
 Espinoza M, et al. *J Alzheimers Dis.* 2008; 14:1-16.
 Goedert M, et al. *Proc Natl Acad Sci U S A.* 1988; 85:4051-5.
 Shin RW, et al. *Lab Invest.* 1991; 64:693-702.

Note: This product is for in vitro research use only