

MSH2 Antibody

Catalog No: #P1030

Package Size: #P1030-1 0.1ml #P1030-2 1ml

Orders: order@signalwayantibody.com

Support: tech@signalwayantibody.com

Description

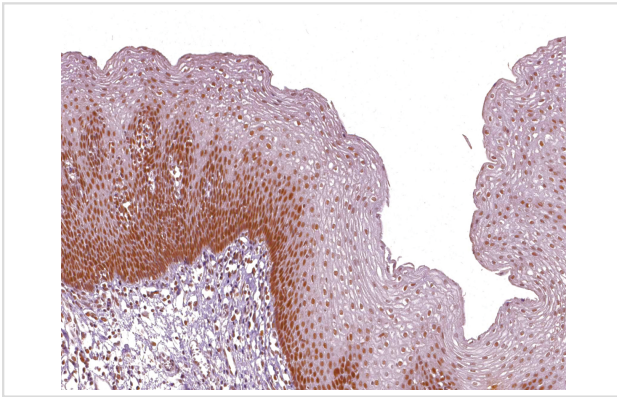
Product Name	MSH2 Antibody
Host Species	Mouse
Clonality	Monoclonal
Clone No.	IHC410
Applications	IHC
Species Reactivity	Human
Formulation	Tris Buffer, pH 7.3 - 7.7, with 1% BSA and
Storage	Store at 2-8C. Do not freeze.

Application Details

Recommended

working dilution range:1:100 - 1:200

Images



MSH2 (P1030) on Esophagus

Product Description

MutS Homolog 2 (MSH2) is a protein involved in the mismatch-repair pathway. This protein is commonly associated with hereditary non-polyposis colorectal cancer, and mutations in this gene are correlated with the development of sporadic colorectal carcinoma. Expression levels of MSH2 are abnormally low in a high percentage of patients with microsatellite instability, as well as endometrial and ovarian cancers. Use of Anti-MSH2 is optimized when paired in an IHC panel with antibodies against MSH6, MLH1, and PMS2. Reports have shown Anti-MSH2 to be useful in the detection of the protein in a number of normal and neoplastic tissues, and for identifying a loss of MSH2 in tumors that are microsatellite-unstable.

References

- Pal T, et al. *Cancer*. 2008; 113:733-42.
 Brueckl WM, et al. *Anticancer Res*. 2003; 23:1773-8.
 Rigau V, et al. *Arch Pathol Lab Med*. 2003; 127:694-700.

Renkonen E, et al. J Clin Oncol. 2003; 21:3629-37.
Hoedema R, et al. Am Surg. 2003; 69:387-92.
Christensen M, et al. Cancer. 2002; 95:2422-30.
Wahlberg SS, et al. Cancer Res. 2002; 62:3485-92.
Lanza G, et al. Mod Pathol. 2002; 15:741-9.
Thibodeau SN, et al. Cancer Res 1996; 56:4836-40.

Note: This product is for in vitro research use only