

## MSH6 Antibody

Catalog No: #P1031

Package Size: #P1031-1 0.1ml #P1031-2 1ml

Orders: [order@signalwayantibody.com](mailto:order@signalwayantibody.com)Support: [tech@signalwayantibody.com](mailto:tech@signalwayantibody.com)

## Description

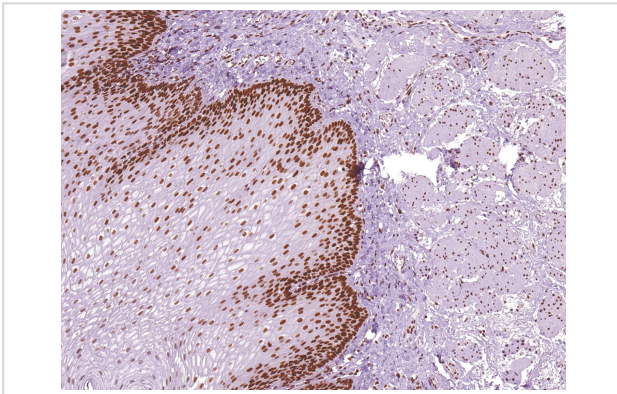
Product Name	MSH6 Antibody
Host Species	Mouse
Clonality	Monoclonal
Clone No.	IHC006
Applications	IHC
Species Reactivity	Human
Formulation	Tris Buffer, pH 7.3 - 7.7, with 1% BSA and
Storage	Store at 2-8C. Do not freeze.

## Application Details

Recommended

working dilution range:1:100 - 1:200

## Images



MSH6 (P1031) on Esophagus

## Product Description

MutS Homolog 6 (MSH6) is a protein involved in the mismatch-repair pathway. This protein is commonly associated with hereditary non-polyposis colorectal cancer, and mutations in this gene are correlated with the development of sporadic colorectal carcinoma. Studies have shown that mutations in MSH6, when co-indicated with mutations in MSH1 and MSH2, contribute to the development of sporadic colorectal carcinoma. Use of Anti-MSH6 is optimized when paired in an IHC panel with MSH2, MLH1, and PMS2.

## References

- Lagerstedt Robinson K, et al. J Natl Cancer Inst. 2007; 99:291-9.
- Niessen RC, et al. Gut. 2006; 55:1781-8.
- Hansen TP, et al. Appl Immunohistochem Mol Morphol. 2006; 14:115-21.
- Lawes DA, et al. Br J Cancer. 2005; 93:472-7.

Stormorken AT, et al. J Clin Oncol. 2005; 23:4705-12.

Rigau V, et al. Arch Pathol Lab Med. 2003; 127:694-700.

Renkonen E, et al. J Clin Oncol. 2003; 21:3629-37.

---

Note: This product is for in vitro research use only