

PMS2 Antibody

Catalog No: #P1032

Package Size: #P1032-1 0.1ml #P1032-2 1ml

Orders: order@signalwayantibody.com

Support: tech@signalwayantibody.com

Description

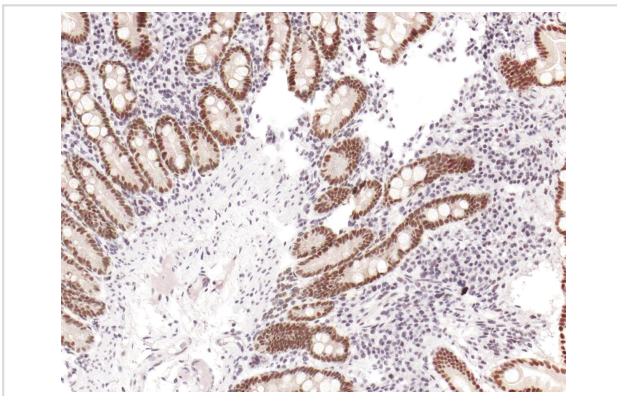
Product Name	PMS2 Antibody
Host Species	Mouse
Clonality	Monoclonal
Clone No.	IHC412
Applications	IHC
Species Reactivity	Human
Formulation	Tris Buffer, pH 7.3 - 7.7, with 1% BSA and
Storage	Store at 2-8C. Do not freeze.

Application Details

Recommended

working dilution range:1:100 - 1:200

Images



PMS2 (P1032) on Duodenum

Product Description

Postmeiotic Segregation Increased 2 (PMS2) is a DNA repair protein involved in mismatch repair. Mutations and deficiencies in the PMS2 gene have been linked to microsatellite instability, and malignancies such as hereditary nonpolyposis colorectal cancer and endometrial cancer. Expression levels of the PMS2 protein may be useful as a screening tool for Lynch syndrome after a colorectal cancer diagnosis. Anti-PMS2 is recommended to be used as part of a panel along with antibodies against MLH1, MSH2, and MSH6.

References

- Cohn DE, et al. *Int J Gynecol Cancer*. 2008; 18:136-40.
 Modica I, et al. *Am J Surg Pathol*. 2007; 31:744-51.
 Sordet C, et al. *Joint Bone Spine*. 2006; 73:646-54.
 Balogh GA, et al. *Int J Mol Med*. 2006; 18:853-7.

Halvarsson B, et al. *Fam Cancer*. 2006; 5:353-8.
Gologan A, et al. *Clin Lab Med*. 2005; 25:179-96.
Lagerstedt Robinson K, et al. *J Natl Cancer Inst*. 2007; 99:291-9.
Hendriks YM, et al. *Gastroenterology*. 2006; 130:312-22.
Truninger K, et al. *Gastroenterology*. 2005; 128:1160-71.
Hampel H, et al. *N Engl J Med*. 2005; 352:1851-60.
Warusavitarne J, et al. *Int J Colorectal Dis*. 2007; 22:739-48.
Gill S, et al. *Clin Cancer Res*. 2005; 11:6466-71.
Modica I, et al. *Am J Surg Pathol*. 2007; 31:744-51.
Shia J, et al. *Am J Surg Pathol*. 2009; 33:1639-45.
Kets CM, et al. *Mod Pathol*. 2006; 19:1624-30.

Note: This product is for in vitro research use only