

CD138 Antibody

Catalog No: #P1037

Package Size: #P1037-1 0.1ml #P1037-2 1ml

Orders: order@signalwayantibody.com

Support: tech@signalwayantibody.com

Description

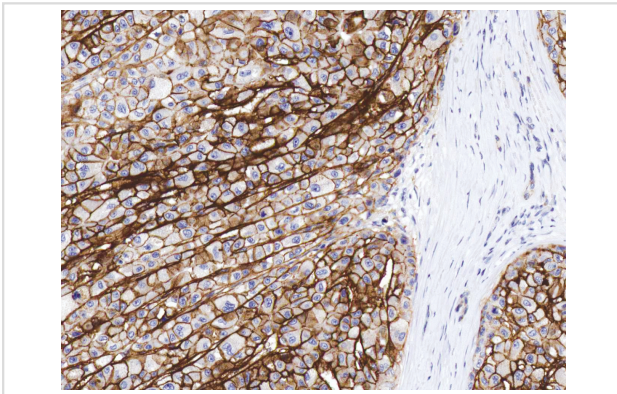
| | |
|--------------------|--|
| Product Name | CD138 Antibody |
| Host Species | Mouse |
| Clonality | Monoclonal |
| Clone No. | IHC138 |
| Applications | IHC |
| Species Reactivity | Human |
| Formulation | Tris Buffer, pH 7.3 - 7.7, with 1% BSA and |
| Storage | Store at 2-8C. Do not freeze. |

Application Details

Recommended

working dilution range:1:100 - 1:200

Images



CD138 [P1037] on Liver Cancer

Product Description

Cluster of differentiation 138 (CD138), also known as Syndecan-1, is a transmembrane glycoprotein present on the surface of B-cells during late stage differentiation. Anti-CD138 is used to differentiate marginal zone lymphoma from lymphoplasmacytic lymphoma. ALK+ Large B-Cell Lymphoma (LBCL) commonly stains positively for CD138, but not for CD20 and CD79a. Anti-CD138 reacts positively with HHV8-associated primary effusion lymphoma that lack B-cell markers. CD138 is also a useful marker for identifying and enumerating benign, reactive, or malignant plasma cells from the bone marrow biopsy samples.

References

- Chilosi M, et al. Mod Pathol. 1999; 12:1101-6.
 Sebestyn A, et al. Br J Haematol. 1999; 104:412-9.
 Bayer-Garner IB, et al. Mod Pathol. 2001; 14:1052-8.

Said J, et al. WHO Press, Geneva, Switzerland. 261.
OConnell FP, et al. Am J Clin Pathol. 2004; 121:254-63.
Colomo L, et al. Am J Surg Pathol. 2004; 28:736-47.
Carbone A, et al. Blood. 1998; 91:747-55.

Note: This product is for in vitro research use only