

## Actin, Smooth Muscle Antibody

Catalog No: #P1039

Package Size: #P1039-1 0.1ml #P1039-2 1ml

Orders: [order@signalwayantibody.com](mailto:order@signalwayantibody.com)Support: [tech@signalwayantibody.com](mailto:tech@signalwayantibody.com)

## Description

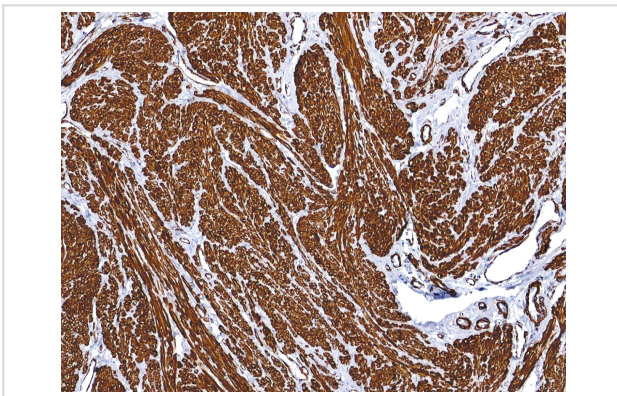
Product Name	Actin, Smooth Muscle Antibody
Host Species	Mouse
Clonality	Monoclonal
Clone No.	IHC506
Applications	IHC
Species Reactivity	Human
Formulation	Tris Buffer, pH 7.3 - 7.7, with 1% BSA and
Storage	Store at 2-8C. Do not freeze.

## Application Details

Recommended

working dilution range: 1:100 - 1:200

## Images



Actin, Smooth Muscle [P1039] on Small Intestine

## Product Description

Actin is part of the cytoskeletal system of all cell types. Smooth Muscle Actin is found in myofibroblasts and myoepithelium, but not in cardiac and skeletal muscles. Labelling of smooth muscle actin in concert with muscle specific actin staining can allow for differentiation between rhabdomyosarcoma and leiomyosarcoma, as Muscle specific actin is found in rhabdomyoblasts, while smooth muscle actin is found in leiomyosarcomas.

## References

Cooke PH. J Cell Biol. 1976; 68:539-556.

Gown AM, et al. J Cell Biol. 1985; 100:807- 813.

Lazarides E. J Histochem Cytochem. 1975; 223:507-528.

---

Note: This product is for in vitro research use only