

# CD15/Leu-M1 Antibody

Catalog No: #P1040

Package Size: #P1040-1 0.1ml #P1040-2 1ml

Orders: [order@signalwayantibody.com](mailto:order@signalwayantibody.com)Support: [tech@signalwayantibody.com](mailto:tech@signalwayantibody.com)

## Description

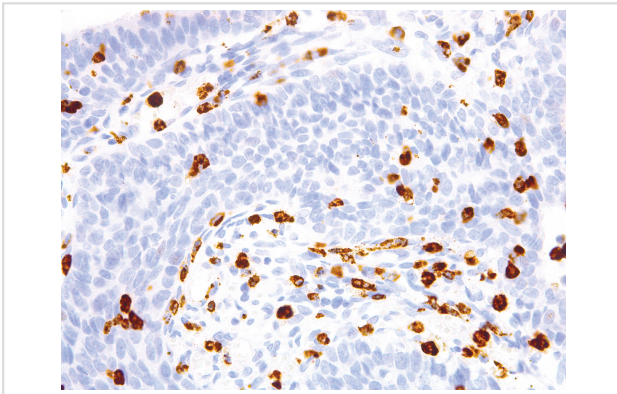
Product Name	CD15/Leu-M1 Antibody
Host Species	Mouse
Clonality	Monoclonal
Clone No.	IHC527
Applications	IHC
Species Reactivity	Human
Formulation	Tris Buffer, pH 7.3 - 7.7, with 1% BSA and
Storage	Store at 2-8C. Do not freeze.

## Application Details

Recommended

working dilution range:1:100 - 1:200

## Images



CD15/Leu-M1 [P1040] on Cervical Cancer

## Product Description

Cluster of differentiation 15 (CD15) is a carbohydrate adhesion molecule. Positive staining for CD15 and negative staining for leukocyte common antigen or other B- or T-cell lineage markers helps recognize Reed Sternberg cells (RSC) in Classical Hodgkins Lymphoma (CHL), and distinguishes it from Hodgkin-like neoplasms. CD15 does not stain mesotheliomas and is therefore most useful for distinguishing epithelial mesothelioma from adenocarcinoma.

## References

- Kerr M, et al. Histochem J. 1992; 24:811-26.
- Hsu S, et al. Am J Clin Path. 1984; 82:666-73.
- Pellegrini W, et al. Haematologica. 2007; 92:708-9.
- Arber D, et al. Applied Immunohistochem. 1993; 1:17-30.

---

Note: This product is for in vitro research use only