

CTBP1 antibody

Catalog No: #22807

Orders: order@signalwayantibody.com

Support: tech@signalwayantibody.com

Description

Product Name	CTBP1 antibody
Host Species	Rabbit
Clonality	Polyclonal
Purification	Purified by antigen-affinity chromatography.
Applications	WB IF
Species Reactivity	Hu
Immunogen Type	Recombinant protein
Immunogen Description	Recombinant protein fragment contain a sequence corresponding to a region within amino acids 194 and 349 of Human CTBP1
Target Name	CTBP1
Accession No.	Swiss-Prot:Q13363Gene ID:1487
Uniprot	Q13363
GeneID	1487;
Concentration	0.4mg/ml
Formulation	Supplied in 0.1M Tris-buffered saline with 10% Glycerol (pH7.0). 0.01% Thimerosal was added as a preservative.
Storage	Store at -20°C for long term preservation (recommended). Store at 4°C for short term use.

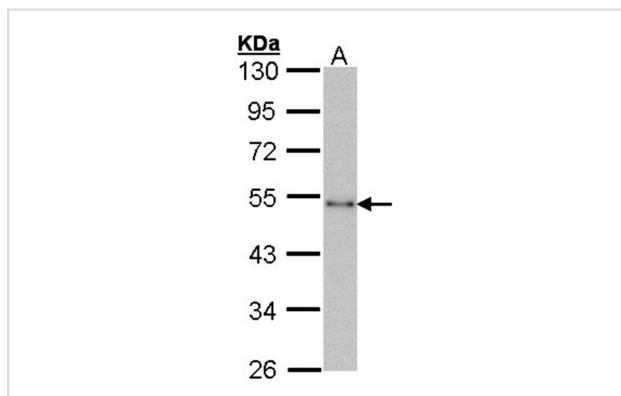
Application Details

Predicted MW: 48kd

Western blotting: 1:500-1:3000

Immunofluorescence: 1:100-1:200

Images



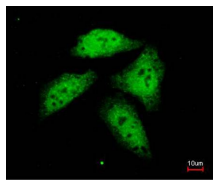
Sample (30 ug of whole cell lysate)

A: HeLa

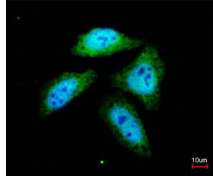
10% SDS PAGE

Primary antibody diluted at 1: 1000

Immunofluorescence analysis of paraformaldehyde-fixed HeLa, using CtBP1 antibody at 1: 200 dilution.



Merged with DNA probe



Background

This gene encodes a protein that binds to the C-terminus of adenovirus E1A proteins. This phosphoprotein is a transcriptional repressor and may play a role during cellular proliferation. This protein and the product of a second closely related gene, CTBP2, can dimerize. Both proteins can also interact with a polycomb group protein complex which participates in regulation of gene expression during development. Alternative splicing of transcripts from this gene results in multiple transcript variants. [provided by RefSeq]

Note: This product is for in vitro research use only