

## FSH Antibody

Catalog No: #P1043

Package Size: #P1043-1 0.1ml #P1043-2 1ml

Orders: [order@signalwayantibody.com](mailto:order@signalwayantibody.com)Support: [tech@signalwayantibody.com](mailto:tech@signalwayantibody.com)

## Description

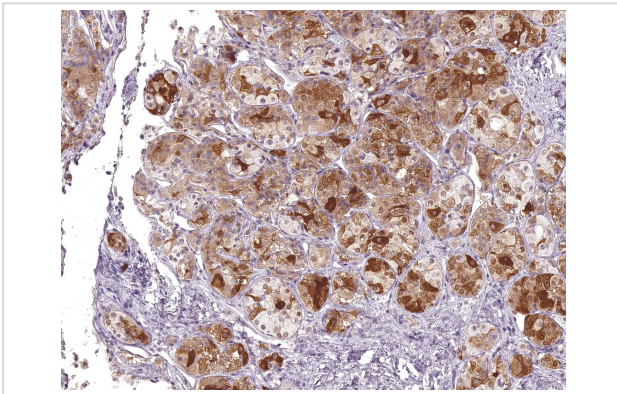
Product Name	FSH Antibody
Host Species	Mouse
Clonality	Monoclonal
Clone No.	IHC580
Applications	IHC
Species Reactivity	Human
Formulation	Tris Buffer, pH 7.3 - 7.7, with 1% BSA and
Storage	Store at 2-8C. Do not freeze.

## Application Details

Recommended

working dilution range:1:100 - 1:200

## Images



FSH [P1043] on Pituitary Gland

## Product Description

Follicle-Stimulating Hormone (FSH) allows for progression of ovarian folliculogenesis, and enables Sertoli cell proliferation in the testis. Anti-FSH reacts with FSH-producing cells, therefore FSH staining is useful for classifying pituitary cancers and understanding pituitary disease.

## References

- Schmid M, et al. *Pathol Res Pract*. 2001; 197:663-9.
- Uccella S, et al. *Pituitary*. 2000; 3:131-9.
- La Rosa S, et al. *Virchows Arch*. 2000; 437:264-9.

---

Note: This product is for in vitro research use only