

Kappa Antibody

Catalog No: #P1045

Package Size: #P1045-1 0.1ml #P1045-2 1ml

Orders: order@signalwayantibody.com

Support: tech@signalwayantibody.com

Description

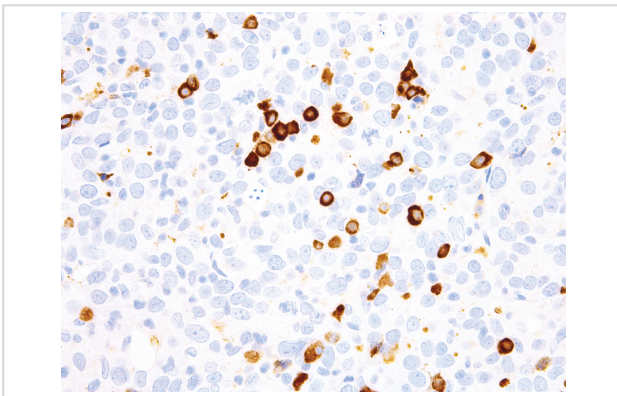
Product Name	Kappa Antibody
Host Species	Mouse
Clonality	Monoclonal
Clone No.	IHC610
Applications	IHC
Species Reactivity	Human
Formulation	Tris Buffer, pH 7.3 - 7.7, with 1% BSA and
Storage	Store at 2-8C. Do not freeze.

Application Details

Recommended

working dilution range:1:100 - 1:200

Images



Kappa [P1045] on Ovary

Product Description

Anti-Kappa recognizes surface immunoglobulin on normal and neoplastic B-cells, and has been indicated as a potential aid in the identification of leukemias, plasmacytomas, and certain non-Hodgkins lymphomas, where the expression of a single light chain class is restricted. The determination of light chain ratio is critical in evaluating B-cell neoplasms, as the majority of B-cell lymphomas express either kappa or lambda light chains, while a mixture of kappa and lambda is characteristic of reactive proliferations. In paraffin-embedded tissue, Anti-Kappa displays strong staining of kappa-positive plasma cells, as well as cells that have absorbed exogenous immunoglobulins.

References

- Bray M, et al. Am J Clin Pathol. 1983; 80:526-8.
 Ashton-Key M, et al. Histopathology. 1996; 29:525-31.
 Kurtin PJ, et al. Am J Clin Pathol. 1999; 112:319-29.

Falini B, et al. J Histochem Cytochem. 1982; 30:21-6.
Marshall-Taylor CE, et al. Appl Immunohistochem Mol Morphol. 2002; 10:258-62.
Sobol RE, et al. Clin Immunol Immunopathol. 1982; 24:139 -44.
Samoszuk MK, et al. Diagn Immunol. 1985; 3:133-8.
Abbondanzo SL, et al. Ann Diagn Pathol. 1999; 3:318-27.

Note: This product is for in vitro research use only