

## WDR4 Antibody

Catalog No: #42846

Orders: order@signalwayantibody.com

Support: tech@signalwayantibody.com

## Description

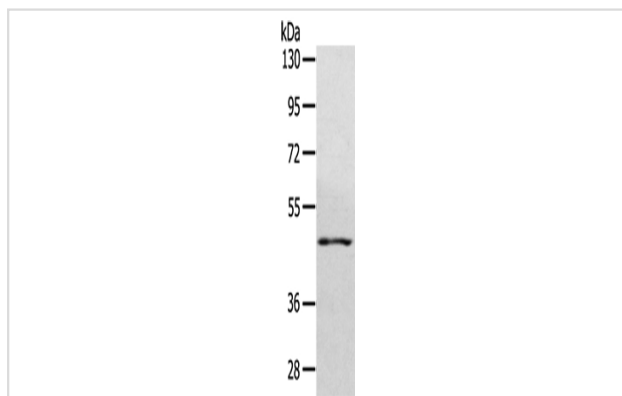
Product Name	WDR4 Antibody
Host Species	Rabbit
Clonality	Polyclonal
Purification	Antigen affinity purification.
Applications	WB IHC
Species Reactivity	Hu Ms
Specificity	The antibody detects endogenous levels of total WDR4 protein.
Immunogen Type	protein
Immunogen Description	Fusion protein of human WDR4
Target Name	WDR4
Other Names	TRM82; TRMT82
Accession No.	Swiss-Prot#: P57081 Gene ID: 10785
Uniprot	P57081
GeneID	10785;
Calculated MW	45kd
Concentration	1.8mg/ml
Formulation	Rabbit IgG in pH7.4 PBS, 0.05% NaN <sub>3</sub> , 40% Glycerol.
Storage	Store at -20°C

## Application Details

Western blotting: 1:200-1:1000

Immunohistochemistry: 1:25-1:100

## Images



Gel: 8%SDS-PAGE

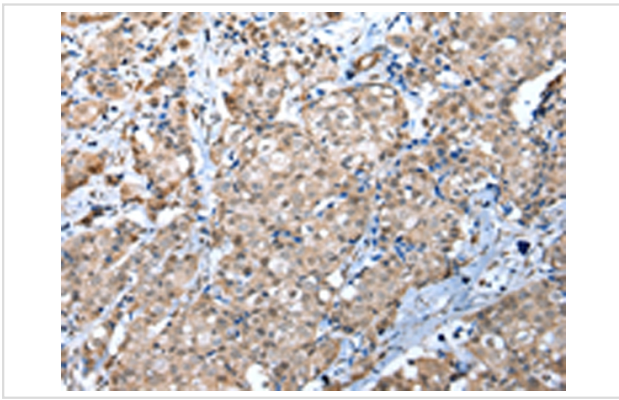
Lysate: 40 µg

Lane: NIH/3T3 cell

Primary antibody: 1/450 dilution

Secondary antibody: Goat anti rabbit IgG at 1/8000 dilution

Exposure time: 30 seconds



Immunohistochemical analysis of paraffin-embedded Human breast cancer tissue using #42846 at dilution 1/30,

## Background

This gene encodes a member of the WD repeat protein family. WD repeats are minimally conserved regions of approximately 40 amino acids typically bracketed by gly-his and trp-asp (GH-WD), which may facilitate formation of heterotrimeric or multiprotein complexes. Members of this family are involved in a variety of cellular processes, including cell cycle progression, signal transduction, apoptosis, and gene regulation.?

Note: This product is for in vitro research use only