

# Podoplanin Antibody

Catalog No: #P1051

Package Size: #P1051-1 0.1ml #P1051-2 1ml

Orders: [order@signalwayantibody.com](mailto:order@signalwayantibody.com)Support: [tech@signalwayantibody.com](mailto:tech@signalwayantibody.com)

## Description

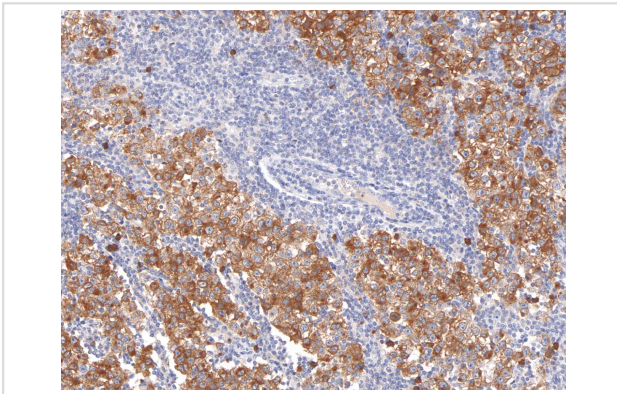
Product Name	Podoplanin Antibody
Host Species	Mouse
Clonality	Monoclonal
Clone No.	IHC650
Applications	IHC
Species Reactivity	Human
Formulation	Tris Buffer, pH 7.3 - 7.7, with 1% BSA and
Storage	Store at 2-8C. Do not freeze.

## Application Details

Recommended

working dilution range:1:100 - 1:200

## Images



Podoplanin [P1051] on Testicular Cancer

## Product Description

Podoplanin is a transmembrane mucoprotein specifically expressed in the endothelium of lymphatic capillaries, while remaining absent from the blood vasculature. The protein is co-localized with VEGFR3/FLT4 in normal skin and kidney. Anti-Podoplanin is useful in the identification of lymphangiomas, Kaposi sarcomas, epithelioid mesotheliomas, hemangioblastomas, seminomas, and some angiosarcomas which likely have lymphatic differentiation.

## References

- Ordenez NG. *Adv Anat Pathol.* 2006; 13:83-8.
- Ordenez NG. *Hum Pathol.* 2005; 36:372-80.
- Niakosari F, et al. *Arch Dermatol.* 2005; 141:440-4.
- Galambos C, et al. *Pediatr Dev Pathol.* 2005; 8:191-9.
- Fukunaga M. *Histopathology.* 2005; 46:396-402.

Fogt F, et al. *Oncol Rep.* 2004; 11:47-50.  
Kahn HJ, et al. *Mod Pathol.* 2002; 15:434-40.  
Franke FE, et al. *J Cutan Pathol.* 2004; 31:362-7.  
Kalof AN, et al. *Adv Anat Pathol.* 2009; 16:62-4.  
Chu AY, et al. *Mod Pathol.* 2005; 18:105-10.  
Iczkowski KA, et al. *Hum Pathol.* 2008; 39:275C81.

---

Note: This product is for in vitro research use only