

SALL4 Antibody

Catalog No: #P1052

Package Size: #P1052-1 0.1ml #P1052-2 1ml

Orders: order@signalwayantibody.com

Support: tech@signalwayantibody.com

Description

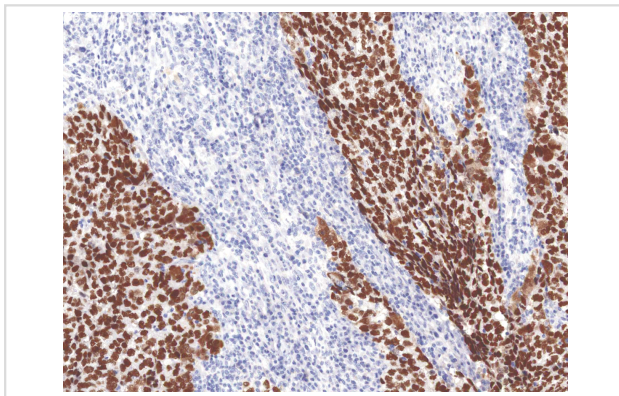
Product Name	SALL4 Antibody
Host Species	Mouse
Clonality	Monoclonal
Clone No.	IHC659
Applications	IHC
Species Reactivity	Human
Formulation	Tris Buffer, pH 7.3 - 7.7, with 1% BSA and
Storage	Store at 2-8C. Do not freeze.

Application Details

Recommended

working dilution range:1:100 - 1:200

Images



SALL4 [P1052] on Testicular Cancer

Product Description

Sal-Like Protein 4 (SALL4), is a zinc finger transcription factor found in germ cells and human blood progenitor cells, with functional involvement in modulating Oct-4 to maintain embryonic stem cell pluripotency. SALL4 is a useful marker for acute myeloid leukemia, B-cell acute lymphocytic leukemia, intratubular germ cell neoplasia, seminomas/dysgerminomas, and yolk sac tumors (both pediatric and postpubertal). Anti-SALL4 is used to detect embryonal carcinomas, hepatocellular carcinoma (HCC), gliomas, ovarian primitive germ-cell tumors, choriocarcinomas, spermatogonia, teratoma, gastric cancer, breast cancer, and lung cancer. Expression of SALL4 is often associated with poor prognosis in HCC, and with metastasis in endometrial cancer, colorectal carcinoma, and esophageal squamous cell carcinoma.

References

Ma Y, et al. Blood. 2006; 108:2726-35.

de Celis JF, et al. Int J Dev Biol. 2009; 53:1385C98.

Kohlhase J, et al. Hum Mutat. 2005; 26:176C83.
Miettinen M, et al. Am J Surg Pathol. 2014; 38:410C20.
Zhang X, et al. Cancer Lett. 2015; 357:55C62.
Ueno S, et al. Exp Hematol. 2014; 42:307C16.
Cao D, et al. Am J Surg Pathol. 2009; 33:1065C77.
Zhang L, et al. Oncogene. 2014; 33:5491C500.
Kobayashi D, et al. Int J Oncol. 2011; 38:933C9.
Cui W, et al. Mod Pathol. 2006; 19:1585-92.
Cao D, et al. Am J Surg Pathol. 2009; 33:894-904.

Note: This product is for in vitro research use only