

TFE3 Antibody

Catalog No: #P1053

Package Size: #P1053-1 0.1ml #P1053-2 1ml

Orders: order@signalwayantibody.comSupport: tech@signalwayantibody.com

Description

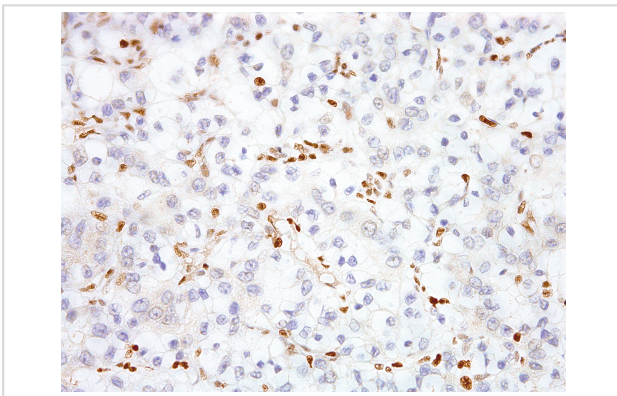
Product Name	TFE3 Antibody
Host Species	Mouse
Clonality	Monoclonal
Clone No.	IHC672
Applications	IHC
Species Reactivity	Human
Formulation	Tris Buffer, pH 7.3 - 7.7, with 1% BSA and
Storage	Store at 2-8C. Do not freeze.

Application Details

Recommended

working dilution range:1:100 - 1:200

Images



TFE3 [P1053] on Kidney

Product Description

Transcription Factor E3 (TFE3) is a transcription factor that binds to the MUE3-type E-box sequences involved in TGF- signalling. Anti-TFE3 staining is the most sensitive and specific indicator of Xp11 translocation renal cell carcinomas. Since alveolar soft part sarcoma (ASPS) is characterized by a specific chromosomal rearrangement resulting in a chimeric transcription factor (ASPSCR1-TFE3), this TFE3 IVD antibody is also a useful diagnostic tool for recognizing ASPS.

References

- Argani P, et al. Am J Clin Pathol. 2006; 126:332-4.
Argani P, et al. Am J Surg Pathol. 2003; 27:750-61.
Lazar AJ, et al. Histopathology. 2009; 55:750-5.

Note: This product is for in vitro research use only