

WDR5 Antibody

Catalog No: #42847

Orders: order@signalwayantibody.com

Support: tech@signalwayantibody.com

Description

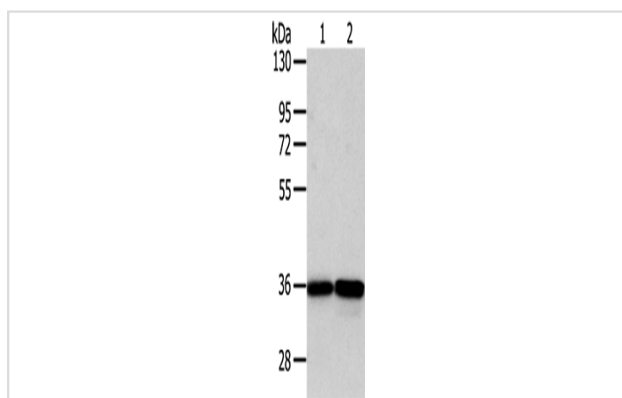
Product Name	WDR5 Antibody
Host Species	Rabbit
Clonality	Polyclonal
Purification	Antigen affinity purification.
Applications	WB IHC
Species Reactivity	Hu Ms Rt
Specificity	The antibody detects endogenous levels of total WDR5 protein.
Immunogen Type	protein
Immunogen Description	Fusion protein of human WDR5
Target Name	WDR5
Other Names	SWD3; BIG-3; CFAP89
Accession No.	Swiss-Prot#: P61964 Gene ID: 11091
Uniprot	P61964
GeneID	11091;
Calculated MW	37kd
Concentration	1.7mg/ml
Formulation	Rabbit IgG in pH7.4 PBS, 0.05% NaN ₃ , 40% Glycerol.
Storage	Store at -20°C

Application Details

Western blotting: 1:500-1:2000

Immunohistochemistry: 1:25-1:100

Images



Gel: 8%SDS-PAGE

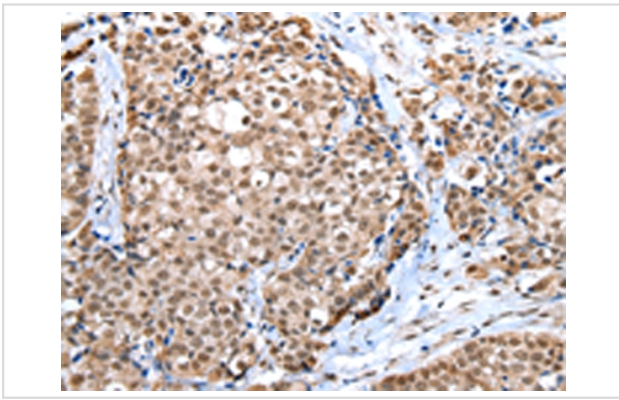
Lysate: 40 µg

Lane 1-2: PC3 and A375 cell

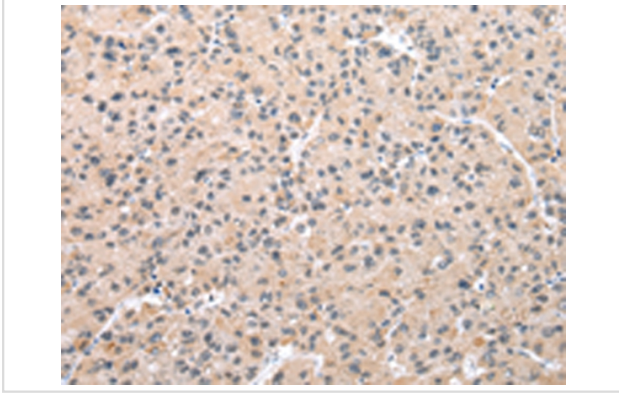
Primary antibody: 1/350 dilution

Secondary antibody: Goat anti rabbit IgG at 1/8000 dilution

Exposure time: 5 seconds



Immunohistochemical analysis of paraffin-embedded Human breast cancer tissue using #42847 at dilution 1/30.



Immunohistochemical analysis of paraffin-embedded Human liver cancer tissue using #42847 at dilution 1/30.

Background

This gene encodes a member of the WD repeat protein family. WD repeats are minimally conserved regions of approximately 40 amino acids typically bracketed by gly-his and trp-asp (GH-WD), which may facilitate formation of heterotrimeric or multiprotein complexes. Members of this family are involved in a variety of cellular processes, including cell cycle progression, signal transduction, apoptosis, and gene regulation. This protein contains 7 WD repeats.

Note: This product is for in vitro research use only