

WDR41 Antibody

Catalog No: #42848

Orders: order@signalwayantibody.comSupport: tech@signalwayantibody.com

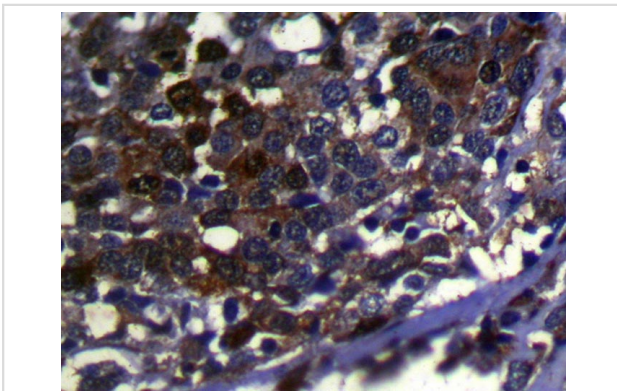
Description

Product Name	WDR41 Antibody
Host Species	Rabbit
Clonality	Polyclonal
Purification	Antigen affinity purification.
Applications	IHC
Species Reactivity	Hu
Specificity	The antibody detects endogenous levels of total WDR41 protein.
Immunogen Type	protein
Immunogen Description	Fusion protein of human WDR41
Target Name	WDR41
Other Names	MSTP048
Accession No.	Swiss-Prot#: Q9HAD4 Gene ID: 55255
Uniprot	Q9HAD4
GeneID	55255;
Concentration	0.7mg/ml
Formulation	Rabbit IgG in pH7.4 PBS, 0.05% NaN ₃ , 40% Glycerol.
Storage	Store at -20°C

Application Details

Immunohistochemistry: 1:100-1:200

Images



Immunohistochemical analysis of paraffin-embedded Human Liver cancer tissue using #42848 at dilution 1/100.

Background

WD-repeats are motifs that are found in a variety of proteins and are characterized by a conserved core of 40-60 amino acids, which commonly form a tertiary propeller structure. While proteins that contain WD-repeats participate in a wide range of cellular functions, they are generally involved in regulatory mechanisms involving signal transduction, apoptosis, transcriptional regulation, cell cycle control. WD repeats serve as sites for protein-protein interaction and some seem to mediate the assembly of protein complexes. WDR41 (WD repeat-containing protein 41) is a 459 amino

acid protein that contains six WD repeats. WDR41 is encoded by a gene located on human chromosome 5q13.3.

Note: This product is for in vitro research use only