

WDR61 Antibody

Catalog No: #42853

Orders: order@signalwayantibody.comSupport: tech@signalwayantibody.com

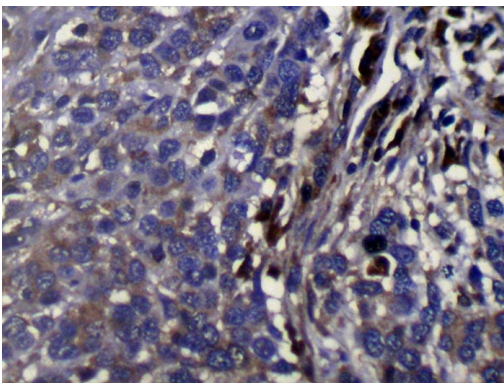
Description

Product Name	WDR61 Antibody
Host Species	Rabbit
Clonality	Polyclonal
Purification	Antigen affinity purification.
Applications	IHC
Species Reactivity	Hu
Specificity	The antibody detects endogenous levels of total WDR61 protein.
Immunogen Type	protein
Immunogen Description	Full length fusion protein of human WDR61
Target Name	WDR61
Other Names	SKI8; REC14
Accession No.	Swiss-Prot#: Q9GZS3 Gene ID: 80349
Uniprot	Q9GZS3
GeneID	80349;
Concentration	1.1mg/ml
Formulation	Rabbit IgG in pH7.4 PBS, 0.05% NaN ₃ , 40% Glycerol.
Storage	Store at -20°C

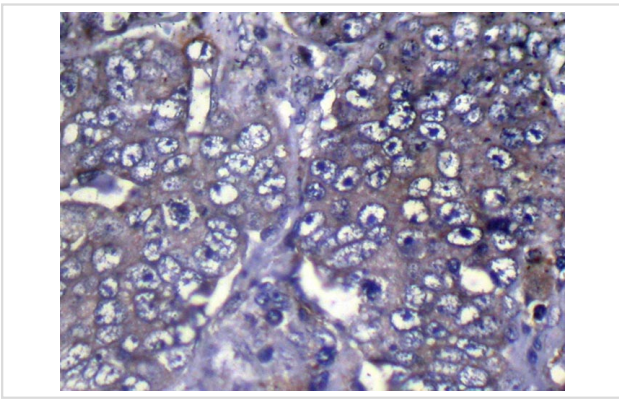
Application Details

Immunohistochemistry: 1:100-1:200

Images



Immunohistochemical analysis of paraffin-embedded Human Liver cancer tissue using #42853 at dilution 1/100.



Immunohistochemical analysis of paraffin-embedded Human Breast cancer tissue using #42853 at dilution 1/100.

Background

WDR61 is a subunit of the human PAF and SKI complexes, which function in transcriptional regulation and are involved in events downstream of RNA synthesis, such as RNA surveillance (Zhu et al., 2005 [PubMed 16024656]).

Note: This product is for in vitro research use only