

DCAF7 Antibody

Catalog No: #42854

Orders: order@signalwayantibody.comSupport: tech@signalwayantibody.com

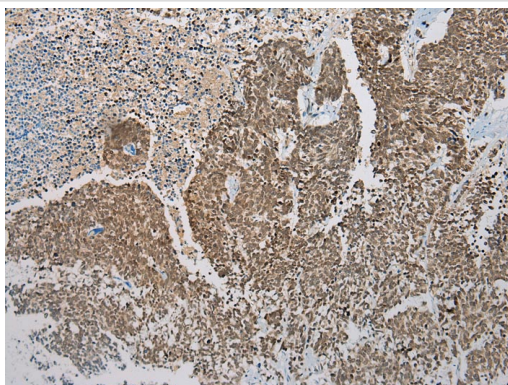
Description

Product Name	DCAF7 Antibody
Host Species	Rabbit
Clonality	Polyclonal
Purification	Antigen affinity purification.
Applications	IHC
Species Reactivity	Hu Ms
Specificity	The antibody detects endogenous levels of total DCAF7 protein.
Immunogen Description	Fusion protein of human DCAF7
Target Name	DCAF7
Other Names	AN11; HAN11; WDR68; SWAN-1
Accession No.	Swiss-Prot#: P61962Gene ID: 10238
Uniprot	P61962
GeneID	10238;
Concentration	2mg/ml
Formulation	Rabbit IgG in pH7.4 PBS, 0.05% NaN ₃ , 40% Glycerol.
Storage	Store at -20°C

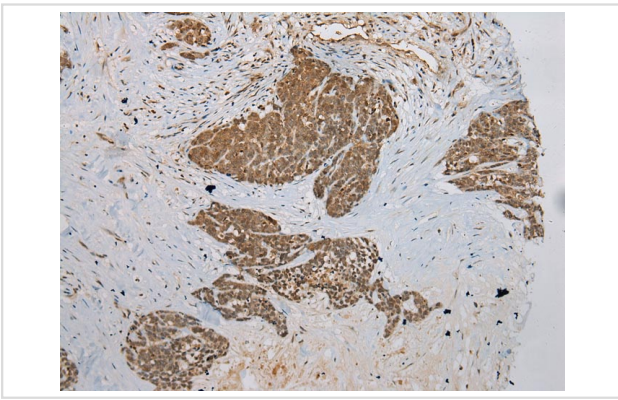
Application Details

Immunohistochemistry: 1:100-1:200

Images



Immunohistochemical analysis of paraffin-embedded Human Lung cancer tissue using #42854 at dilution 1/200.



Immunohistochemical analysis of paraffin-embedded Human Thyroid cancer tissue using #42854 at dilution 1/200.

Background

This gene encodes a protein with multiple WD40 repeats which facilitate protein-protein interactions and thereby enable the assembly of multiprotein complexes. This protein has been shown to function as a scaffold protein for protein complexes involved in kinase signaling. This highly conserved gene is present in eukaryotic plants, fungi, and animals. The ortholog of this gene was first identified in plants as a key regulator of anthocyanin biosynthesis and flower pigmentation. Alternative splicing results in multiple transcript variants.?

Note: This product is for in vitro research use only