

## WFDC5 Antibody

Catalog No: #42857

Orders: [order@signalwayantibody.com](mailto:order@signalwayantibody.com)Support: [tech@signalwayantibody.com](mailto:tech@signalwayantibody.com)

## Description

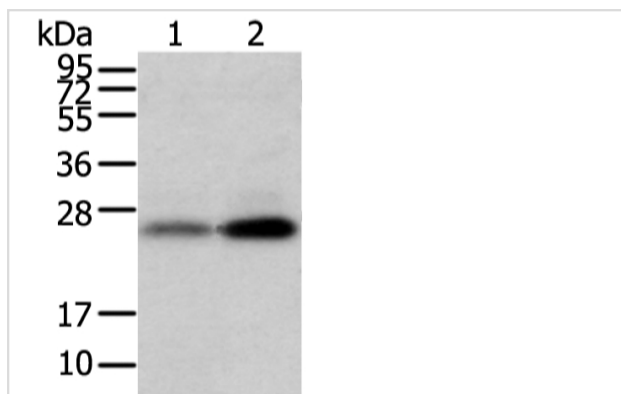
Product Name	WFDC5 Antibody
Host Species	Rabbit
Clonality	Polyclonal
Purification	Antigen affinity purification.
Applications	WB IHC
Species Reactivity	Hu Ms
Specificity	The antibody detects endogenous levels of total WFDC5 protein.
Immunogen Description	Fusion protein of human WFDC5
Target Name	WFDC5
Other Names	PRG5; WAP1; dJ211D12.5
Accession No.	Swiss-Prot#: Q8TCV5Gene ID: 149708
Uniprot	Q8TCV5
GeneID	149708;
Calculated MW	24kd
Concentration	3.5mg/ml
Formulation	Rabbit IgG in pH7.4 PBS, 0.05% NaN <sub>3</sub> , 40% Glycerol.
Storage	Store at -20°C

## Application Details

Western blotting: 1:1000-1:5000

Immunohistochemistry: 1:100-1:200

## Images



Gel: 12%SDS-PAGE

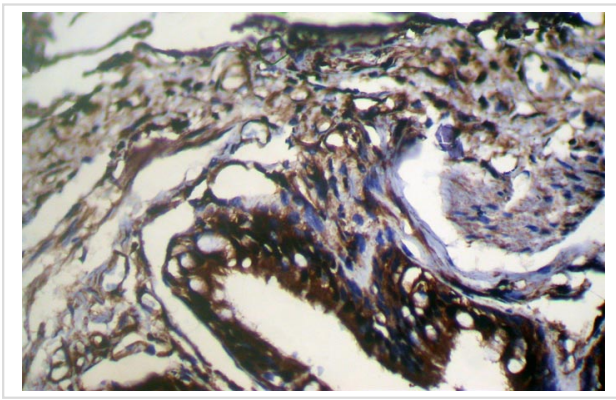
Lysate: 40 µg

Lane 1-2: Mouse trachea and brain tissue

Primary antibody: 1/1100 dilution

Secondary antibody: Goat anti rabbit IgG at 1/8000 dilution

Exposure time: 10 seconds



Immunohistochemical analysis of paraffin-embedded Human Lung cancer tissue using #42857 at dilution 1/200.

## Background

This gene encodes a member of the WAP-type four-disulfide core (WFDC) domain family. Most WFDC proteins contain only one WFDC domain, and this encoded protein contains two WFDC domains. The WFDC domain, or WAP signature motif, contains eight cysteines forming four disulfide bonds at the core of the protein, and functions as a protease inhibitor. Most WFDC gene members are localized to chromosome 20q12-q13 in two clusters: centromeric and telomeric. This gene belongs to the centromeric cluster.

Note: This product is for in vitro research use only