

WSB1 Antibody

Catalog No: #42861

Orders: order@signalwayantibody.comSupport: tech@signalwayantibody.com

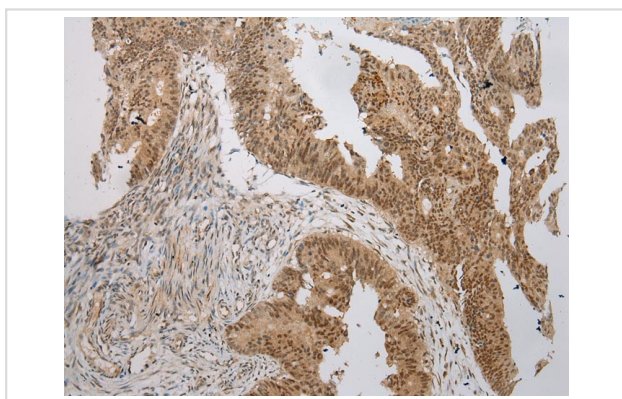
Description

Product Name	WSB1 Antibody
Host Species	Rabbit
Clonality	Polyclonal
Purification	Antigen affinity purification.
Applications	IHC
Species Reactivity	Hu
Specificity	The antibody detects endogenous levels of total WSB1 protein.
Immunogen Description	Fusion protein of human WSB1
Target Name	WSB1
Other Names	SWIP1; WSB-1
Accession No.	Swiss-Prot#: Q9Y6I7?Gene ID: 26118
Uniprot	Q9Y6I7
GeneID	26118;
Concentration	1.3mg/ml
Formulation	Rabbit IgG in pH7.4 PBS, 0.05% NaN ₃ , 40% Glycerol.
Storage	Store at -20°C

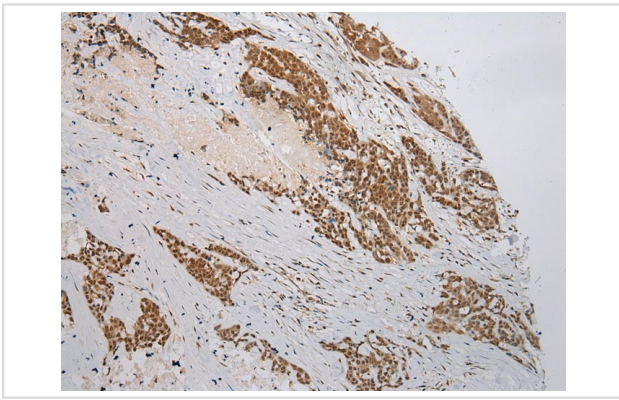
Application Details

Immunohistochemistry: 1:100-1:200

Images



Immunohistochemical analysis of paraffin-embedded Human Colorectal cancer tissue using #42861 at dilution 1/100.



Immunohistochemical analysis of paraffin-embedded Human Thyroid cancer tissue using #42861 at dilution 1/100.

Background

This gene encodes a member of the WD-protein subfamily. This protein shares a high sequence identity to mouse and chick proteins. It contains several WD-repeats spanning most of the protein and an SOCS box in the C-terminus. Alternatively spliced transcript variants encoding distinct isoforms have been found for this gene.?

Note: This product is for in vitro research use only