

## WWP1 Antibody

Catalog No: #42862

Orders: [order@signalwayantibody.com](mailto:order@signalwayantibody.com)Support: [tech@signalwayantibody.com](mailto:tech@signalwayantibody.com)

## Description

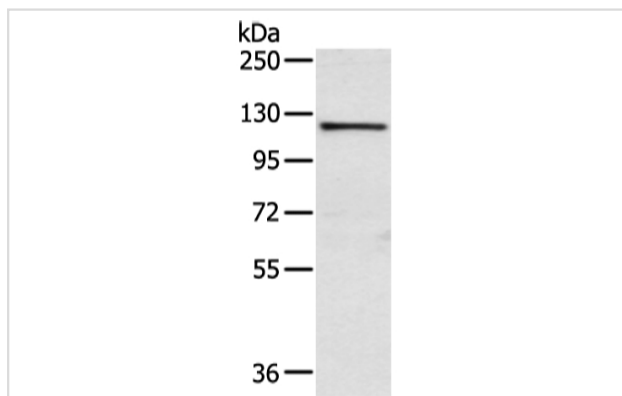
Product Name	WWP1 Antibody
Host Species	Rabbit
Clonality	Polyclonal
Purification	Antigen affinity purification.
Applications	WB IHC
Species Reactivity	Hu
Specificity	The antibody detects endogenous levels of total WWP1 protein.
Immunogen Type	protein
Immunogen Description	Fusion protein of human WWP1
Target Name	WWP1
Other Names	AIP5; Tiul1; hSDRP1
Accession No.	Swiss-Prot#: Q9H0M0 Gene ID: 11059
Uniprot	Q9H0M0
GeneID	11059;
Calculated MW	105kd
Concentration	1.4mg/ml
Formulation	Rabbit IgG in pH7.4 PBS, 0.05% NaN <sub>3</sub> , 40% Glycerol.
Storage	Store at -20°C

## Application Details

Western blotting: 1:500-1:2000

Immunohistochemistry: 1:100-1:200

## Images



Gel: 6%SDS-PAGE

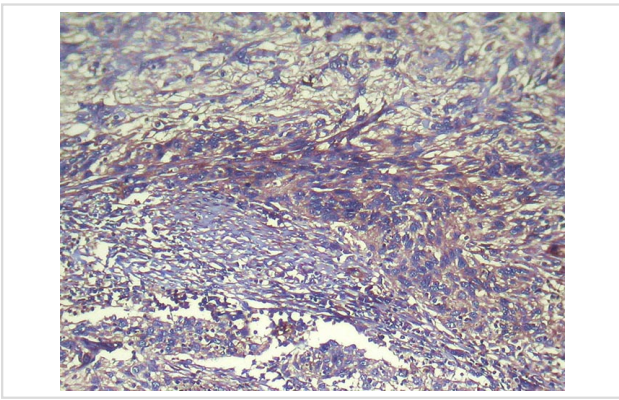
Lysate: 40 µg

Lane: PC3 cell

Primary antibody: 1/750 dilution

Secondary antibody: Goat anti rabbit IgG at 1/8000 dilution

Exposure time: 10 seconds



Immunohistochemical analysis of paraffin-embedded Human Esophagus cancer tissue using #42862 at dilution 1/100,

## Background

WW domain-containing proteins are found in all eukaryotes and play an important role in the regulation of a wide variety of cellular functions such as protein degradation, transcription, and RNA splicing. This gene encodes a protein which contains 4 tandem WW domains and a HECT (homologous to the E6-associated protein carboxyl terminus) domain. The encoded protein belongs to a family of NEDD4-like proteins, which are E3 ubiquitin-ligase molecules and regulate key trafficking decisions, including targeting of proteins to proteasomes or lysosomes.?

Note: This product is for in vitro research use only