

NDUFB10 Antibody

Catalog No: #42881

Orders: order@signalwayantibody.comSupport: tech@signalwayantibody.com

Description

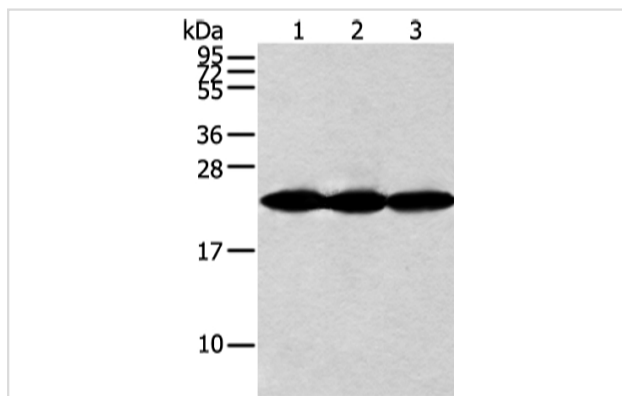
Product Name	NDUFB10 Antibody
Host Species	Rabbit
Clonality	Polyclonal
Purification	Antigen affinity purification.
Applications	WB IHC
Species Reactivity	Hu
Specificity	The antibody detects endogenous levels of total NDUFB10 protein.
Immunogen Type	protein
Immunogen Description	Full length fusion protein of human NDUFB10
Target Name	NDUFB10
Other Names	PDSW
Accession No.	Swiss-Prot#: O96000Gene ID: 4716
Uniprot	O96000
GeneID	4716;
Calculated MW	21kd
Concentration	2mg/ml
Formulation	Rabbit IgG in pH7.4 PBS, 0.05% NaN ₃ , 40% Glycerol.
Storage	Store at -20°C

Application Details

Western blotting: 1:1000-1:5000

Immunohistochemistry: 1:25-1:100

Images



Gel: 12%SDS-PAGE

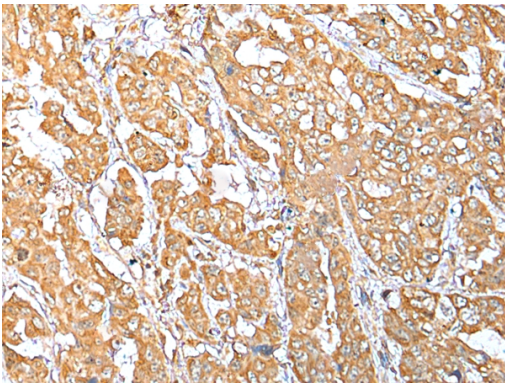
Lysate: 40 µg

Lane 1-3: Jurkat and A549 cell, human fetal muscle tissue

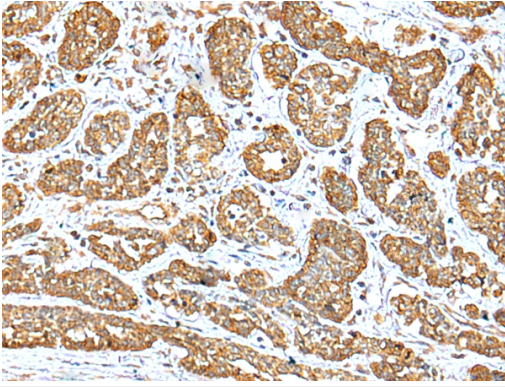
Primary antibody: 1/500 dilution

Secondary antibody: Goat anti rabbit IgG at 1/8000 dilution

Exposure time: 10 seconds



Immunohistochemical analysis of paraffin-embedded Human breast cancer tissue using #42881 at dilution 1/35.



Immunohistochemical analysis of paraffin-embedded Human esophagus cancer tissue using #42881 at dilution 1/35.

Background

NADH dehydrogenase [ubiquinone] 1 beta subcomplex subunit 10 is an enzyme that in humans is encoded by the *NDUFB10* gene. NADH dehydrogenase (ubiquinone) 1 beta subcomplex subunit 10 is an accessory subunit of the NADH dehydrogenase (ubiquinone) complex, located in the mitochondrial inner membrane. It is also known as Complex I and is the largest of the five complexes of the electron transport chain.

Note: This product is for in vitro research use only