

## NDUFB3 Antibody

Catalog No: #42882

Orders: [order@signalwayantibody.com](mailto:order@signalwayantibody.com)Support: [tech@signalwayantibody.com](mailto:tech@signalwayantibody.com)

## Description

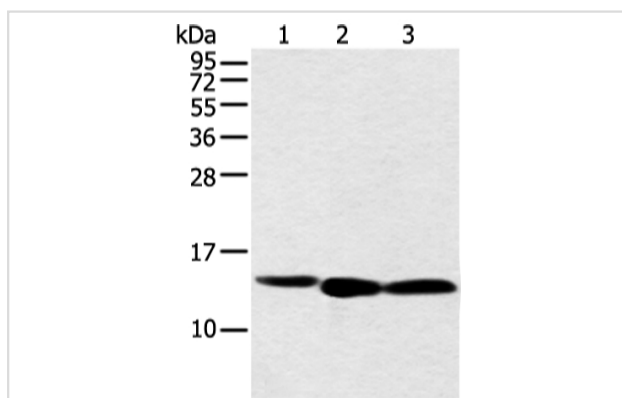
Product Name	NDUFB3 Antibody
Host Species	Rabbit
Clonality	Polyclonal
Purification	Antigen affinity purification.
Applications	WB IHC
Species Reactivity	Hu
Specificity	The antibody detects endogenous levels of total NDUFB3 protein.
Immunogen Type	protein
Immunogen Description	Full length fusion protein of human NDUFB3
Target Name	NDUFB3
Other Names	B12; CI-B12
Accession No.	Swiss-Prot#: O43676?Gene ID: 4709
Uniprot	O43676
GeneID	4709;
Calculated MW	11kd
Concentration	1.9mg/ml
Formulation	Rabbit IgG in pH7.4 PBS, 0.05% NaN <sub>3</sub> , 40% Glycerol.
Storage	Store at -20°C

## Application Details

Western blotting: 1:500-1:2000

Immunohistochemistry: 1:25-1:100

## Images



Gel: 12%SDS-PAGE

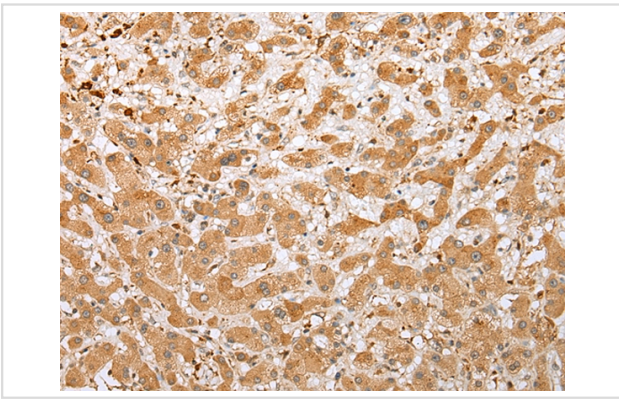
Lysate: 40 µg

Lane 1-3: HeLa, PC3 and 293T cell

Primary antibody: 1/500 dilution

Secondary antibody: Goat anti rabbit IgG at 1/8000 dilution

Exposure time: 30 seconds



Immunohistochemical analysis of paraffin-embedded Human liver cancer tissue using #42882 at dilution 1/20,

## Background

This gene encodes an accessory subunit of the mitochondrial membrane respiratory chain NADH dehydrogenase (Complex I) which is the first enzyme in the electron transport chain of mitochondria. This protein localizes to the inner membrane of the mitochondrion as a single-pass membrane protein. Mutations in this gene contribute to mitochondrial complex 1 deficiency.

Note: This product is for in vitro research use only