

NDUFB9 Antibody

Catalog No: #42883

Orders: order@signalwayantibody.com

Support: tech@signalwayantibody.com

Description

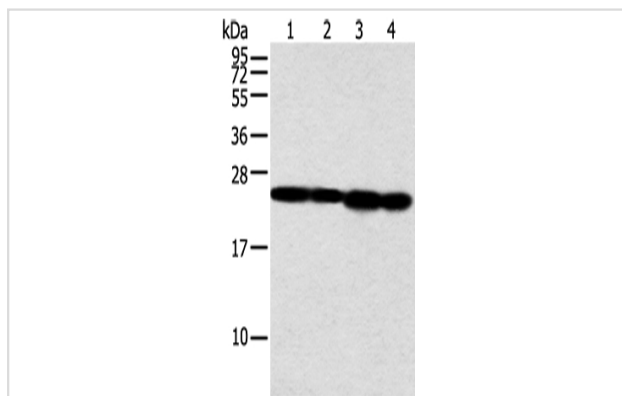
| | |
|-----------------------|---|
| Product Name | NDUFB9 Antibody |
| Host Species | Rabbit |
| Clonality | Polyclonal |
| Purification | Antigen affinity purification. |
| Applications | WB |
| Species Reactivity | Hu |
| Specificity | The antibody detects endogenous levels of total NDUFB9 protein. |
| Immunogen Type | protein |
| Immunogen Description | Fusion protein of human NDUFB9 |
| Target Name | NDUFB9 |
| Other Names | B22; LYRM3; CI-B22; UQOR22 |
| Accession No. | Swiss-Prot#: Q9Y6M9 Gene ID: 4715 |
| Uniprot | Q9Y6M9 |
| GeneID | 4715; |
| Calculated MW | 22kd |
| Concentration | 1.3mg/ml |
| Formulation | Rabbit IgG in pH7.4 PBS, 0.05% NaN ₃ , 40% Glycerol. |
| Storage | Store at -20°C |

Application Details

Western blotting: 1:500-1:2000

Immunohistochemistry: 1:25-1:100

Images



Gel: 12%SDS-PAGE

Lysate: 40 µg

Lane 1-4: Jurkat and A549 cell, human fetal liver tissue and HeLa cell

Primary antibody: 1/350 dilution

Secondary antibody: Goat anti rabbit IgG at 1/8000 dilution

Exposure time: 5 seconds

Background

NADH dehydrogenase [ubiquinone] 1 beta subcomplex subunit 9 is an enzyme that in humans is encoded by the NDUFB9 gene. NADH

dehydrogenase (ubiquinone) 1 beta subcomplex subunit 9 is an accessory subunit of the NADH dehydrogenase (ubiquinone) complex, located in the mitochondrial inner membrane. It is also known as Complex I and is the largest of the five complexes of the electron transport chain.

Note: This product is for in vitro research use only