

PCID2 Antibody

Catalog No: #42887

Orders: order@signalwayantibody.comSupport: tech@signalwayantibody.com

Description

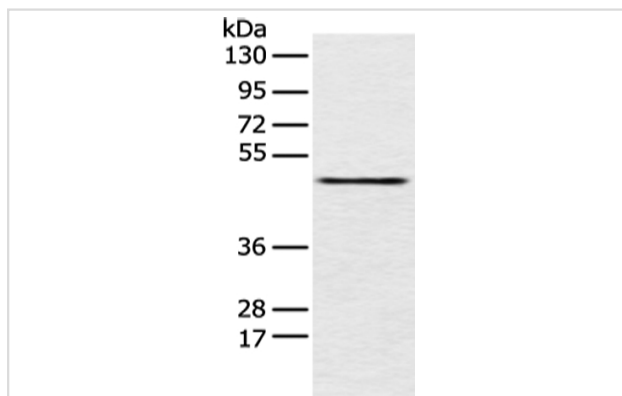
Product Name	PCID2 Antibody
Host Species	Rabbit
Clonality	Polyclonal
Purification	Antigen affinity purification.
Applications	WB IHC
Species Reactivity	Hu Ms
Specificity	The antibody detects endogenous levels of total PCID2 protein.
Immunogen Type	protein
Immunogen Description	Fusion protein of human PCID2
Target Name	PCID2
Other Names	F10
Accession No.	Swiss-Prot#: Q5JVF3?Gene ID: 55795
Uniprot	Q5JVF3
GeneID	55795;
Calculated MW	46kd
Concentration	2.4mg/ml
Formulation	Rabbit IgG in pH7.4 PBS, 0.05% NaN ₃ , 40% Glycerol.
Storage	Store at -20°C

Application Details

Western blotting: 1:200-1:1000

Immunohistochemistry: 1:20-1:100

Images



Gel: 8%SDS-PAGE

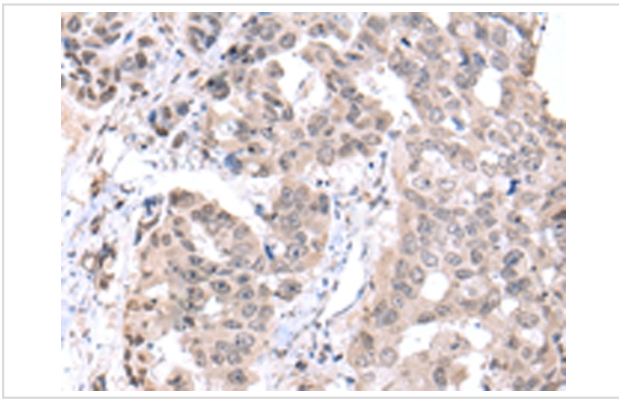
Lysate: 40 µg

Lane: TM4 cell

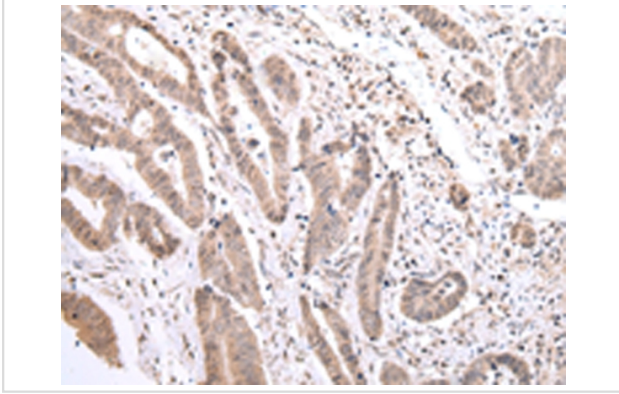
Primary antibody: 1/250 dilution

Secondary antibody: Goat anti rabbit IgG at 1/8000 dilution

Exposure time: 10 seconds



Immunohistochemical analysis of paraffin-embedded Human breast cancer tissue using #42887 at dilution 1/25.



Immunohistochemical analysis of paraffin-embedded Human gastric cancer tissue using #42887 at dilution 1/25.

Background

PCID2 is expressed in immature and early-stage B lymphocytes and regulates expression of the mitotic checkpoint protein MAD2. Required for B-cell survival through the regulation of the expression of cell-cycle checkpoint MAD2L1 protein during B cell differentiation (By similarity). Component of the TREX-2 complex (transcription and export complex 2), composed of at least ENY2, GANP, PCID2, DSS1, and either centrin CETN2 or CETN3 (PubMed:22307388). The TREX-2 complex functions in docking export-competent ribonucleoprotein particles (mRNPs) to the nuclear entrance of the nuclear pore complex (nuclear basket).

Note: This product is for in vitro research use only