

DYNLL2 Antibody

Catalog No: #42890

Orders: order@signalwayantibody.com

Support: tech@signalwayantibody.com

Description

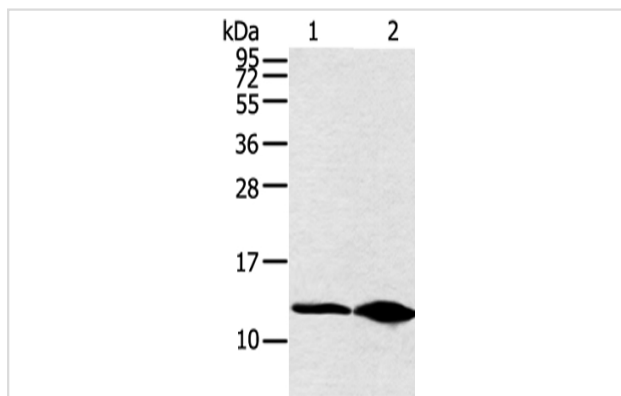
Product Name	DYNLL2 Antibody
Host Species	Rabbit
Clonality	Polyclonal
Purification	Antigen affinity purification.
Applications	WB
Species Reactivity	Hu Ms Rt
Specificity	The antibody detects endogenous levels of total DYNLL2 protein.
Immunogen Type	protein
Immunogen Description	Full length fusion protein of human DYNLL2
Target Name	DYNLL2
Other Names	Dlc2; DNCL1B; RSPH22
Accession No.	Swiss-Prot#: Q96FJ2 Gene ID: 140735
Uniprot	Q96FJ2
GeneID	140735;
Calculated MW	10kd
Concentration	1.5mg/ml
Formulation	Rabbit IgG in pH7.4 PBS, 0.05% NaN ₃ , 40% Glycerol.
Storage	Store at -20°C

Application Details

Western blotting: 1:500-1:2000

Immunohistochemistry: 1:25-1:100

Images



Gel: 12%SDS-PAGE

Lysate: 40 µg

Lane 1-2: Hela cell and human fetal brain tissue

Primary antibody: 1/250 dilution

Secondary antibody: Goat anti rabbit IgG at 1/8000 dilution

Exposure time: 30 seconds

Background

Dynein light chain 2, cytoplasmic is a protein that in humans is encoded by the DYNLL2 gene. Acts as one of several non-catalytic accessory

components of the cytoplasmic dynein 1 complex that are thought to be involved in linking dynein to cargos and to adapter proteins that regulate dynein function. Cytoplasmic dynein 1 acts as a motor for the intracellular retrograde motility of vesicles and organelles along microtubules.

Note: This product is for in vitro research use only