

## MLLT11 Antibody

Catalog No: #42891

Orders: [order@signalwayantibody.com](mailto:order@signalwayantibody.com)Support: [tech@signalwayantibody.com](mailto:tech@signalwayantibody.com)

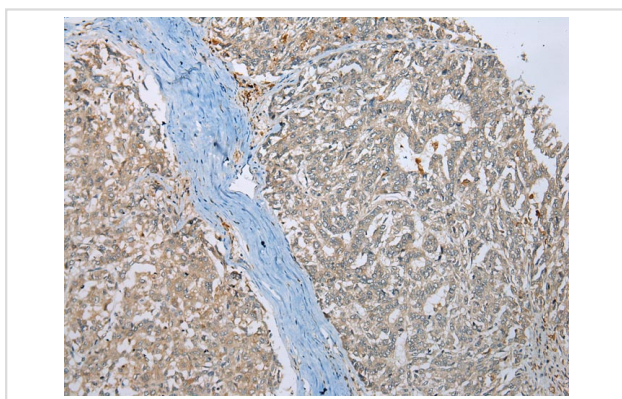
## Description

Product Name	MLLT11 Antibody
Host Species	Rabbit
Clonality	Polyclonal
Purification	Antigen affinity purification.
Applications	IHC
Species Reactivity	Hu
Specificity	The antibody detects endogenous levels of total MLLT11 protein.
Immunogen Description	Full length fusion protein of human MLLT11
Target Name	MLLT11
Other Names	AF1Q
Accession No.	Swiss-Prot#: Q13015Gene ID: 10962
Uniprot	Q13015
GeneID	10962;
Concentration	1.9mg/ml
Formulation	Rabbit IgG in pH7.4 PBS, 0.05% NaN <sub>3</sub> , 40% Glycerol.
Storage	Store at -20°C

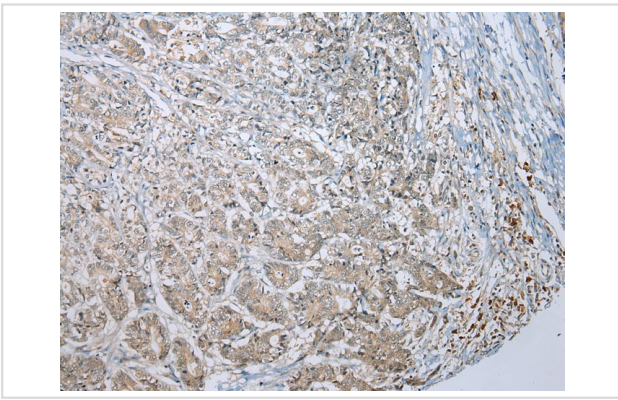
## Application Details

Immunohistochemistry: 1:100-1:200

## Images



Immunohistochemical analysis of paraffin-embedded Human Liver tissue using #42891 at dilution 1/200,



Immunohistochemical analysis of paraffin-embedded Human Gastric tissue using #42891 at dilution 1/200,

## Background

The gene variously symbolized ALL1, HRX, or MLL located on 11q23 has been demonstrated to be fused with a number of translocation partners in cases of leukemia.  $t(1;11)(q21;q23)$  translocations that fused the MLL gene to a gene on chromosomal band 1q21 in 2 infants with acute myelomonocytic leukemia have been demonstrated. The N-terminal portion of the MLL gene is critical for leukemogenesis in translocations involving band 11q23. This gene encodes 90 amino acids. It was found to be highly expressed in the thymus but not in peripheral lymphoid tissues. In contrast to its restricted distribution in normal hematopoietic tissue, this gene was expressed in all leukemic cell lines tested.

Note: This product is for in vitro research use only