

## MPC1 Antibody

Catalog No: #42898

Orders: order@signalwayantibody.com

Support: tech@signalwayantibody.com

## Description

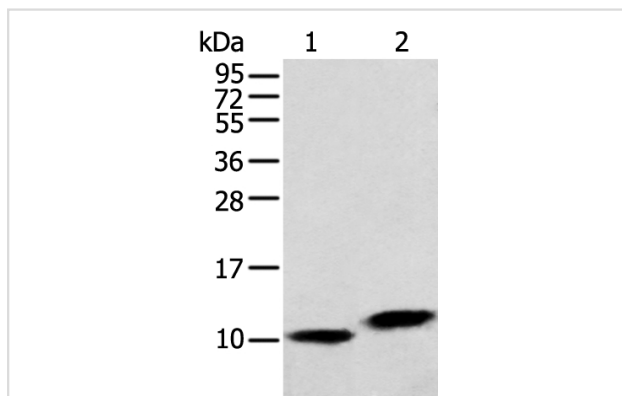
Product Name	MPC1 Antibody
Host Species	Rabbit
Clonality	Polyclonal
Purification	Antigen affinity purification.
Applications	WB IHC
Species Reactivity	Hu
Specificity	The antibody detects endogenous levels of total MPC1 protein.
Immunogen Type	protein
Immunogen Description	Full length fusion protein of human MPC1
Target Name	MPC1
Other Names	MPYCD; BRP44L; CGI-129; dJ68L15.3
Accession No.	Swiss-Prot#: Q9Y5U8 Gene ID: 51660
Uniprot	Q9Y5U8
GeneID	51660;
Calculated MW	12kd
Concentration	1mg/ml
Formulation	Rabbit IgG in pH7.4 PBS, 0.05% NaN <sub>3</sub> , 40% Glycerol.
Storage	Store at -20°C

## Application Details

Western blotting: 1:500-1:2000

Immunohistochemistry: 1:25-1:100

## Images



Gel: 12%SDS-PAGE

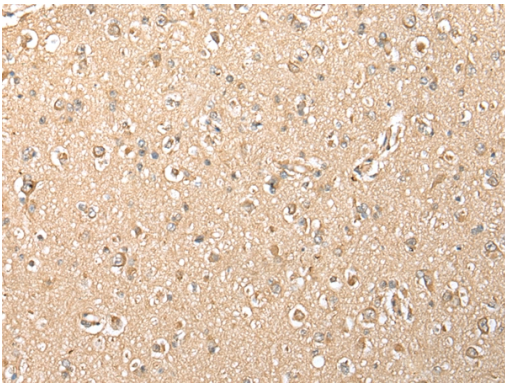
Lysate: 40 µg

Lane 1-2: HeLa cell and Human fetal liver tissue

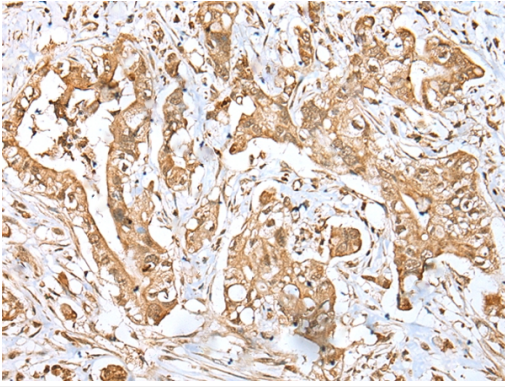
Primary antibody: 1/250 dilution

Secondary antibody: Goat anti rabbit IgG at 1/8000 dilution

Exposure time: 10 seconds



Immunohistochemical analysis of paraffin-embedded Human brain tissue using #42898 at dilution 1/20.



Immunohistochemical analysis of paraffin-embedded Human liver cancer tissue using #42898 at dilution 1/20.

## Background

The protein encoded by this gene is part of an MPC1/MPC2 heterodimer that is responsible for transporting pyruvate into mitochondria. The encoded protein is found in the inner mitochondrial membrane. Defects in this gene are a cause of mitochondrial pyruvate carrier deficiency. Several transcript variants, some protein coding and one non-protein coding, have been found for this gene.

Note: This product is for in vitro research use only