

CRYZL1 Antibody

Catalog No: #42900

Orders: order@signalwayantibody.comSupport: tech@signalwayantibody.com

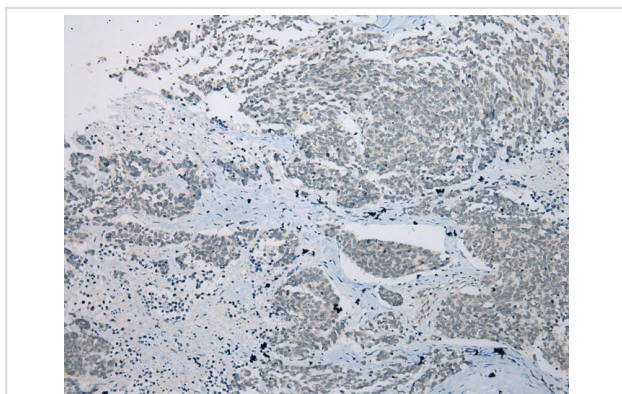
Description

Product Name	CRYZL1 Antibody
Host Species	Rabbit
Clonality	Polyclonal
Purification	Antigen affinity purification.
Applications	IHC
Species Reactivity	Hu
Specificity	The antibody detects endogenous levels of total CRYZL1 protein.
Immunogen Type	protein
Immunogen Description	Full length fusion protein of human CRYZL1
Target Name	CRYZL1
Other Names	4P11; QOH-1
Accession No.	Swiss-Prot#: O95825Gene ID: 9946
Uniprot	O95825
GeneID	9946;
Concentration	0.9mg/ml
Formulation	Rabbit IgG in pH7.4 PBS, 0.05% NaN ₃ , 40% Glycerol.
Storage	Store at -20°C

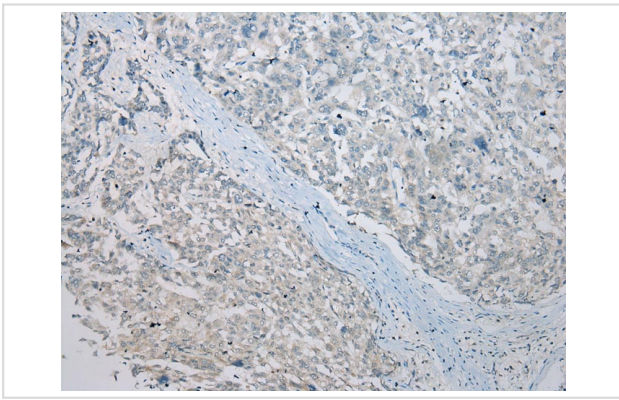
Application Details

Immunohistochemistry: 1:100-1:200

Images



Immunohistochemical analysis of paraffin-embedded Human Lung cancer tissue using #42900 at dilution 1/200.



Immunohistochemical analysis of paraffin-embedded Human Liver cancer tissue using #42900 at dilution 1/200.

Background

This gene encodes a protein that has sequence similarity to zeta crystallin, also known as quinone oxidoreductase. This zeta crystallin-like protein also contains an NAD(P)H binding site. Alternatively spliced transcript variants have been observed but their full-length nature has not been completely determined.

Note: This product is for in vitro research use only