

## ERMP1 Antibody

Catalog No: #42909

Orders: [order@signalwayantibody.com](mailto:order@signalwayantibody.com)Support: [tech@signalwayantibody.com](mailto:tech@signalwayantibody.com)

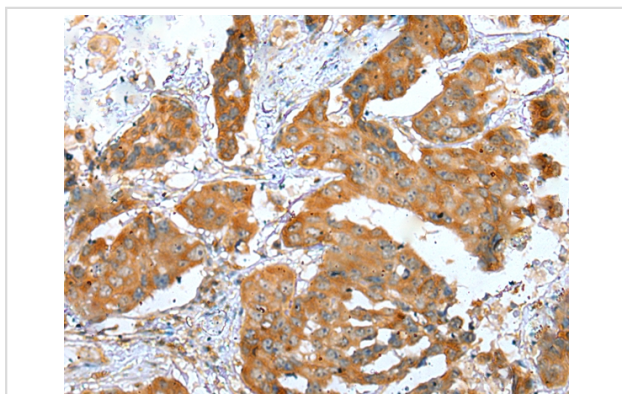
## Description

Product Name	ERMP1 Antibody
Host Species	Rabbit
Clonality	Polyclonal
Purification	Antigen affinity purification.
Applications	IHC
Species Reactivity	Hu
Specificity	The antibody detects endogenous levels of total ERMP1 protein.
Immunogen Type	protein
Immunogen Description	Fusion protein of human ERMP1
Target Name	ERMP1
Other Names	FXNA; KIAA1815; bA207C16.3
Accession No.	Swiss-Prot#: Q7Z2K6 Gene ID: 79956
Uniprot	Q7Z2K6
GeneID	79956;
Concentration	1.7mg/ml
Formulation	Rabbit IgG in pH7.4 PBS, 0.05% NaN <sub>3</sub> , 40% Glycerol.
Storage	Store at -20°C

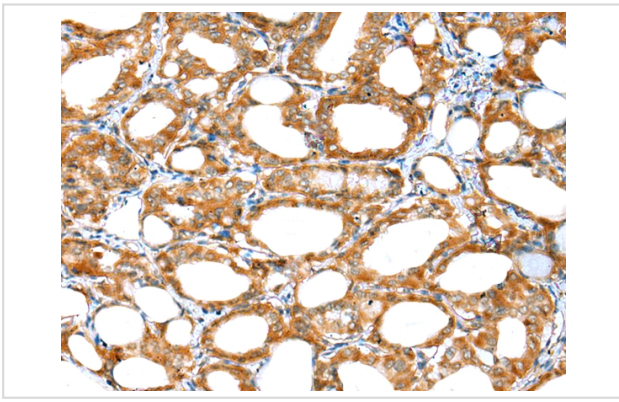
## Application Details

Immunohistochemistry: 1:25-1:100

## Images



Immunohistochemical analysis of paraffin-embedded Human breast cancer tissue using #42909 at dilution 1/30.



Immunohistochemical analysis of paraffin-embedded Human thyroid cancer tissue using #42909 at dilution 1/30.

## Background

---

Within the ovary, required for the organization of somatic cells and oocytes into discrete follicular structures.

---

Note: This product is for in vitro research use only