

MAT2B Antibody

Catalog No: #42910

Orders: order@signalwayantibody.comSupport: tech@signalwayantibody.com

Description

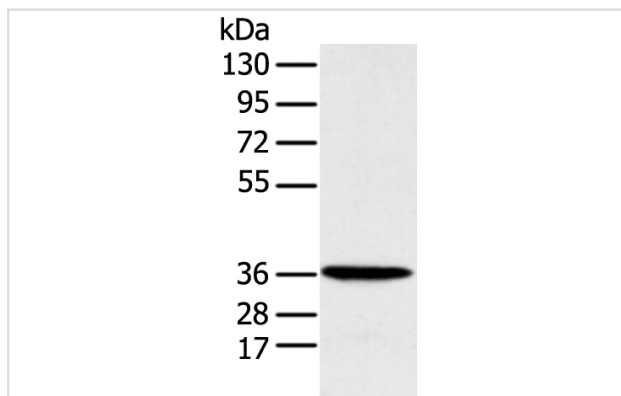
Product Name	MAT2B Antibody
Host Species	Rabbit
Clonality	Polyclonal
Purification	Antigen affinity purification.
Applications	WB
Species Reactivity	Hu
Specificity	The antibody detects endogenous levels of total MAT2B protein.
Immunogen Type	protein
Immunogen Description	Fusion protein of human MAT2B
Target Name	MAT2B
Other Names	TGR; MAT-II; SDR23E1; MATIIbeta; Nbla02999
Accession No.	Swiss-Prot#: Q9NZL9 Gene ID: 27430
Uniprot	Q9NZL9
GeneID	27430;
Calculated MW	38kd
Concentration	2.2mg/ml
Formulation	Rabbit IgG in pH7.4 PBS, 0.05% NaN ₃ , 40% Glycerol.
Storage	Store at -20°C

Application Details

Western blotting: 1:1000-1:5000

Immunohistochemistry: 1:25-1:100

Images



Gel: 8%SDS-PAGE

Lysate: 40 µg

Lane: Human fetal liver tissue

Primary antibody: 1/1000 dilution

Secondary antibody: Goat anti rabbit IgG at 1/8000 dilution

Exposure time: 30 seconds

Background

The protein encoded by this gene belongs to the methionine adenosyltransferase (MAT) family. MAT catalyzes the biosynthesis of

S-adenosylmethionine from methionine and ATP. This protein is the regulatory beta subunit of MAT. Alternative splicing results in multiple transcript variants encoding different isoforms.

Note: This product is for in vitro research use only