

## CBWD1 Antibody

Catalog No: #42912

Orders: [order@signalwayantibody.com](mailto:order@signalwayantibody.com)Support: [tech@signalwayantibody.com](mailto:tech@signalwayantibody.com)

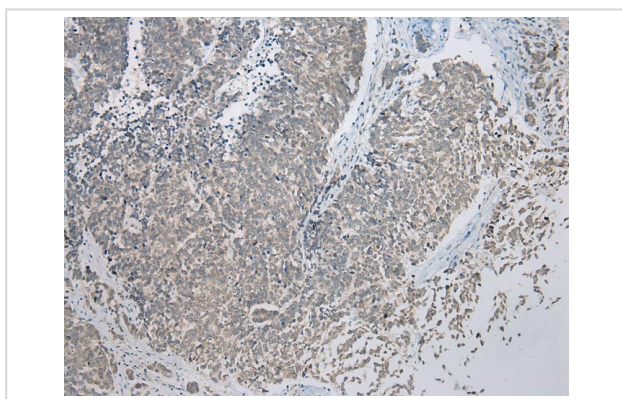
## Description

Product Name	CBWD1 Antibody
Host Species	Rabbit
Clonality	Polyclonal
Purification	Antigen affinity purification.
Applications	IHC
Species Reactivity	Hu
Specificity	The antibody detects endogenous levels of total CBWD1 protein.
Immunogen Description	Fusion protein of human CBWD1
Target Name	CBWD1
Other Names	COBP
Accession No.	Swiss-Prot#: Q9BRT8Gene ID: 55871
Uniprot	Q9BRT8
GeneID	55871;
Concentration	1.2mg/ml
Formulation	Rabbit IgG in pH7.4 PBS, 0.05% NaN <sub>3</sub> , 40% Glycerol.
Storage	Store at -20°C

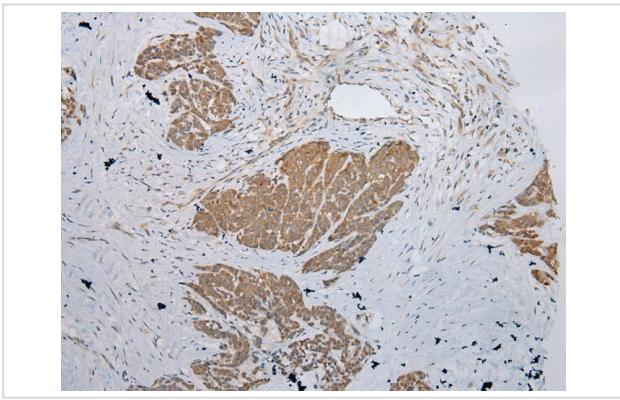
## Application Details

Immunohistochemistry: 1:100-1:200

## Images



Immunohistochemical analysis of paraffin-embedded Human Lung cancer tissue using #42912 at dilution 1/200,



Immunohistochemical analysis of paraffin-embedded Human Thyroid cancer tissue using #42912 at dilution 1/200,

## Background

The function of this protein remains unknown.

Note: This product is for in vitro research use only