

PIM2 antibody

Catalog No: #22814

Orders: order@signalwayantibody.com

Support: tech@signalwayantibody.com

Description

Product Name	PIM2 antibody
Host Species	Rabbit
Clonality	Polyclonal
Purification	Purified by antigen-affinity chromatography.
Applications	WB IHC
Species Reactivity	Hu
Immunogen Type	Recombinant protein
Immunogen Description	Recombinant protein fragment contain a sequence corresponding to a region within amino acids 53 and 238 (Q9P1W9) of PIM2
Target Name	PIM2
Accession No.	Swiss-Prot:Q9P1W9Gene ID:11040
Uniprot	Q9P1W9
GeneID	11040;
Concentration	1mg/ml
Formulation	Supplied in 0.1M Tris-buffered saline with 20% Glycerol (pH7.0). 0.01% Thimerosal was added as a preservative.
Storage	Store at -20°C for long term preservation (recommended). Store at 4°C for short term use.

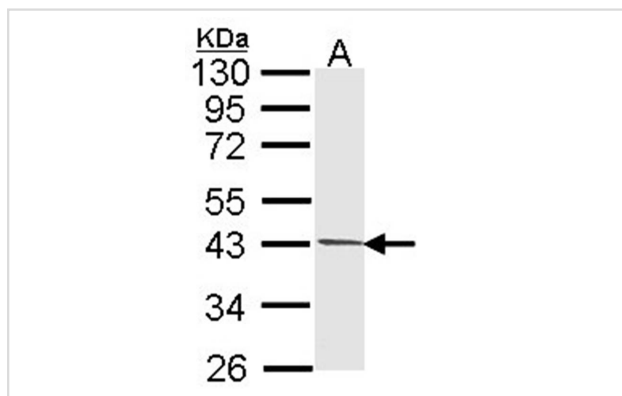
Application Details

Predicted MW: 34kd

Western blotting: 1:500-1:3000

Immunohistochemistry: 1:100-1:250

Images

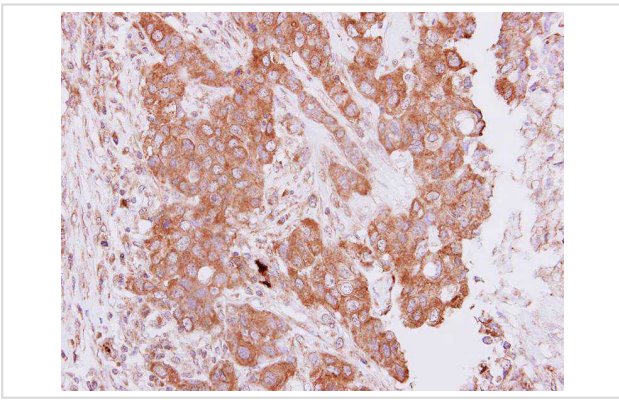


Sample (30 ug of whole cell lysate)

A: 293T

10% SDS PAGE

Primary antibody diluted at 1: 1000



Immunohistochemical analysis of paraffin-embedded Breast ca, using PIM2 antibody at 1: 250 dilution.

Background

PIM2 belongs to a family of protooncogenes that encode serine/threonine protein kinases (Mikkers et al., 2004 [PubMed 15199164]).[supplied by OMIM]

Note: This product is for in vitro research use only