

C8G Antibody

Catalog No: #42930



Orders: [order@signalwayantibody.com](mailto:order@signalwayantibody.com)  
Support: [tech@signalwayantibody.com](mailto:tech@signalwayantibody.com)

Description

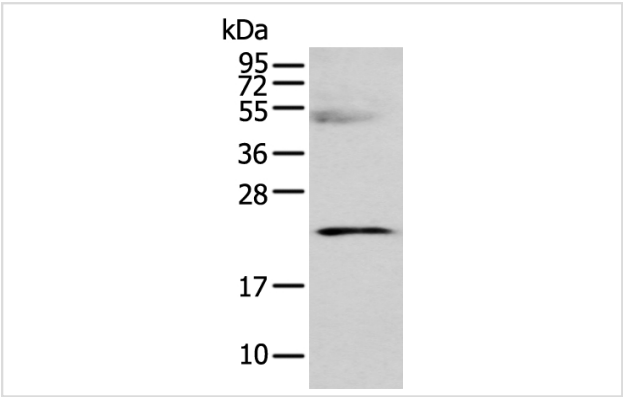
Product Name	C8G Antibody
Host Species	Rabbit
Clonality	Polyclonal
Purification	Antigen affinity purification.
Applications	WB IHC
Species Reactivity	Hu
Specificity	The antibody detects endogenous levels of total C8G protein.
Immunogen Description	Full length fusion protein of human C8G
Target Name	C8G
Other Names	C8C
Accession No.	Swiss-Prot#: P07360Gene ID: 733
Uniprot	P07360
GeneID	733;
Calculated MW	22kd
Concentration	1mg/ml
Formulation	Rabbit IgG in pH7.4 PBS, 0.05% NaN3, 40% Glycerol.
Storage	Store at -20°C

Application Details

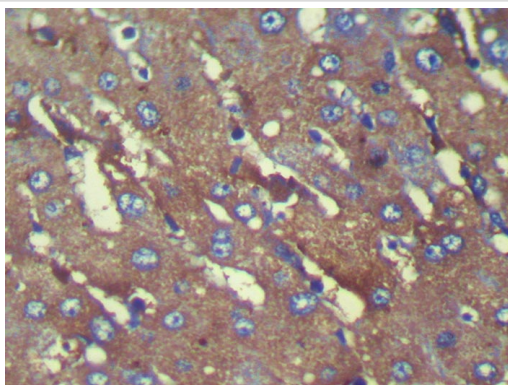
Western blotting: 1:200-1:1000

Immunohistochemistry: 1:100-1:200

Images



Gel: 12%SDS-PAGE  
Lysate: 40 µg  
Lane: Human fetal liver tissue  
Primary antibody: 1/250 dilution  
Secondary antibody: Goat anti rabbit IgG at 1/8000 dilution  
Exposure time: 40 seconds



Immunohistochemical analysis of paraffin-embedded Human Liver cancer tissue using #42930 at dilution 1/100,

## Background

The protein encoded by this gene belongs to the lipocalin family. It is one of the three subunits that constitutes complement component 8 (C8), which is composed of a disulfide-linked C8 alpha-gamma heterodimer and a non-covalently associated C8 beta chain. C8 participates in the formation of the membrane attack complex (MAC) on bacterial cell membranes. While subunits alpha and beta play a role in complement-mediated bacterial killing, the gamma subunit is not required for the bactericidal activity.

Note: This product is for in vitro research use only