

PSMF1 Antibody

Catalog No: #42932

Orders: order@signalwayantibody.comSupport: tech@signalwayantibody.com

Description

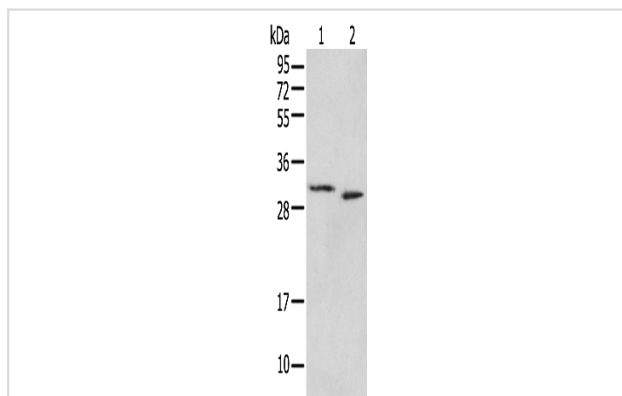
Product Name	PSMF1 Antibody
Host Species	Rabbit
Clonality	Polyclonal
Purification	Antigen affinity purification.
Applications	WB IHC
Species Reactivity	Hu
Specificity	The antibody detects endogenous levels of total PSMF1 protein.
Immunogen Type	protein
Immunogen Description	Full length fusion protein of human PSMF1
Target Name	PSMF1
Other Names	PI31
Accession No.	Swiss-Prot#: Q92530Gene ID: 9491
Uniprot	Q92530
GeneID	9491;
Calculated MW	30kd
Concentration	1.1mg/ml
Formulation	Rabbit IgG in pH7.4 PBS, 0.05% NaN ₃ , 40% Glycerol.
Storage	Store at -20°C

Application Details

Western blotting: 1:200-1:1000

Immunohistochemistry: 1:25-1:100

Images



Gel: 12%SDS-PAGE

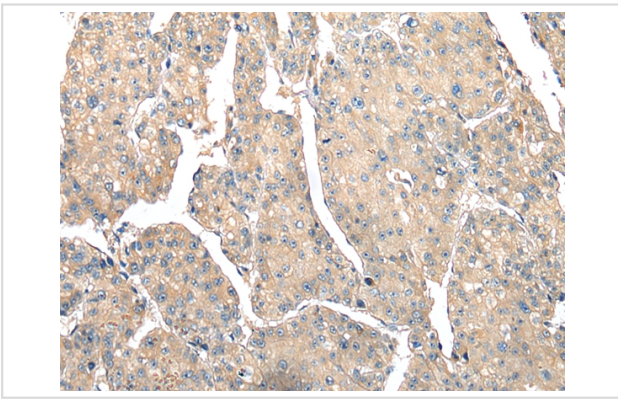
Lysate: 40 µg

Lane 1-2: Hela and HEPG2 cell

Primary antibody: 1/250 dilution

Secondary antibody: Goat anti rabbit IgG at 1/8000 dilution

Exposure time: 35 seconds



Immunohistochemical analysis of paraffin-embedded Human liver cancer tissue using #42932 at dilution 1/30,

Background

The 26S proteasome is a multicatalytic proteinase complex with a highly ordered structure composed of 2 complexes, a 20S core and a 19S regulator. The 20S core is composed of 4 rings of 28 non-identical subunits; 2 rings are composed of 7 alpha subunits and 2 rings are composed of 7 beta subunits. The 19S regulator is composed of a base, which contains 6 ATPase subunits and 2 non-ATPase subunits, and a lid, which contains up to 10 non-ATPase subunits.

Note: This product is for in vitro research use only