

## PIN4 Antibody

Catalog No: #42935

Orders: [order@signalwayantibody.com](mailto:order@signalwayantibody.com)Support: [tech@signalwayantibody.com](mailto:tech@signalwayantibody.com)

## Description

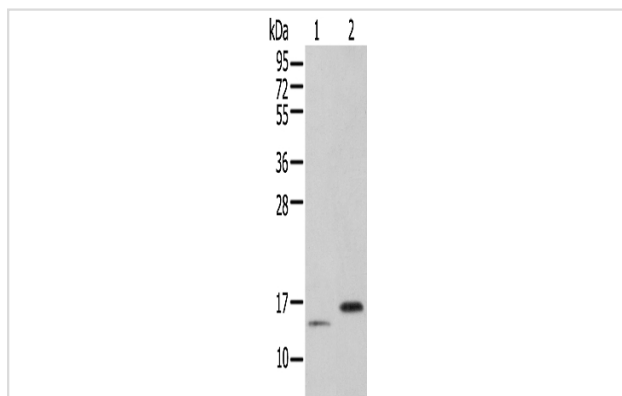
Product Name	PIN4 Antibody
Host Species	Rabbit
Clonality	Polyclonal
Purification	Antigen affinity purification.
Applications	WB
Species Reactivity	Hu
Specificity	The antibody detects endogenous levels of total PIN4 protein.
Immunogen Type	protein
Immunogen Description	Full length fusion protein of human PIN4
Target Name	PIN4
Other Names	EPVH; PAR14; PAR17
Accession No.	Swiss-Prot#: Q9Y237 Gene ID: 5303
Uniprot	Q9Y237
GeneID	5303;
Calculated MW	14kd
Concentration	1mg/ml
Formulation	Rabbit IgG in pH7.4 PBS, 0.05% NaN <sub>3</sub> , 40% Glycerol.
Storage	Store at -20°C

## Application Details

Western blotting: 1:200-1:1000

Immunohistochemistry: 1:25-1:100

## Images



Gel: 12%SDS-PAGE

Lysate: 40 µg

Lane 1-2: 293T cell and Human fetal muscle tissue

Primary antibody: 1/250 dilution

Secondary antibody: Goat anti rabbit IgG at 1/8000 dilution

Exposure time: 3 seconds

## Background

This gene encodes a member of the parvulin subfamily of the peptidyl-prolyl cis/trans isomerase protein family. The encoded protein catalyzes the

isomerization of peptidylprolyl bonds, and may play a role in the cell cycle, chromatin remodeling, and/or ribosome biogenesis. The encoded protein may play an additional role in the mitochondria.

---

Note: This product is for in vitro research use only