

IDO2 Antibody

Catalog No: #42936

Orders: order@signalwayantibody.com

Support: tech@signalwayantibody.com

Description

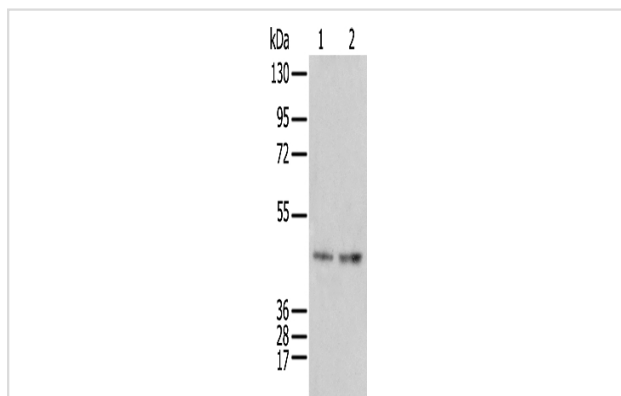
Product Name	IDO2 Antibody
Host Species	Rabbit
Clonality	Polyclonal
Purification	Antigen affinity purification.
Applications	WB
Species Reactivity	Hu
Specificity	The antibody detects endogenous levels of total IDO2 protein.
Immunogen Type	protein
Immunogen Description	Full length fusion protein of human IDO2
Target Name	IDO2
Other Names	INDOL1
Accession No.	Swiss-Prot#: Q6ZQW0 Gene ID: 169355
Uniprot	Q6ZQW0
GeneID	169355;
Calculated MW	45kd
Concentration	1mg/ml
Formulation	Rabbit IgG in pH7.4 PBS, 0.05% NaN ₃ , 40% Glycerol.
Storage	Store at -20°C

Application Details

Western blotting: 1:200-1:1000

Immunohistochemistry: 1:25-1:100

Images



Gel: 8%SDS-PAGE

Lysate: 40 µg

Lane 1-2: Human kidney tissue B β -SKOV3 cell

Primary antibody: 1/250 dilution

Secondary antibody: Goat anti rabbit IgG at 1/8000 dilution

Exposure time: 30 seconds

Background

INDOL1 is also known as IDO2 (indoleamine 2,3-dioxygenase 2) and is a 407 amino acid protein that is expressed in various tissues, including liver,

small intestine, spleen, placenta, thymus, lung, brain, kidney, colon and dendritic cells. INDOL1 is selectively inhibited by D-1MT (1-methyl-d-tryptophan), which also inhibits IDO (indoleamine 2,3-dioxygenase) and is significant because IDO expression causes suppression of T cell responses to tumors in dendritic cells. The inhibition of INDOL1 by D-1MT suggests a common function in immunomodulation. In the human INDOL1 gene, two single nucleotide polymorphisms have been detected which abolish the enzymatic function of INDOL1.

Note: This product is for in vitro research use only