

COMMD6 Antibody

Catalog No: #42937

Orders: order@signalwayantibody.comSupport: tech@signalwayantibody.com

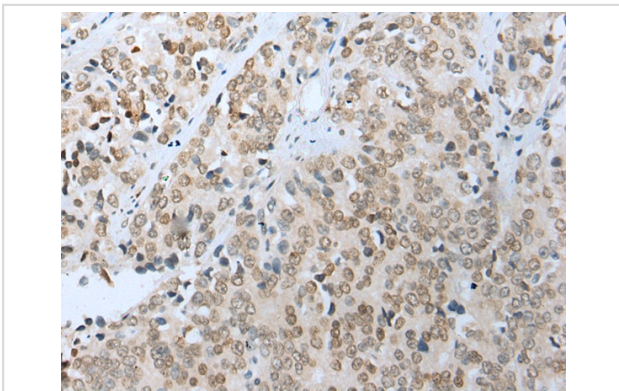
Description

Product Name	COMMD6 Antibody
Host Species	Rabbit
Clonality	Polyclonal
Purification	Antigen affinity purification.
Applications	IHC
Species Reactivity	Hu
Specificity	The antibody detects endogenous levels of total COMMD6 protein.
Immunogen Type	protein
Immunogen Description	Full length fusion protein of human COMMD6
Target Name	COMMD6
Other Names	Acrp
Accession No.	Swiss-Prot#: Q7Z4G1 Gene ID: 170622
Uniprot	Q7Z4G1
GeneID	170622;
Concentration	1.3mg/ml
Formulation	Rabbit IgG in pH7.4 PBS, 0.05% NaN ₃ , 40% Glycerol.
Storage	Store at -20°C

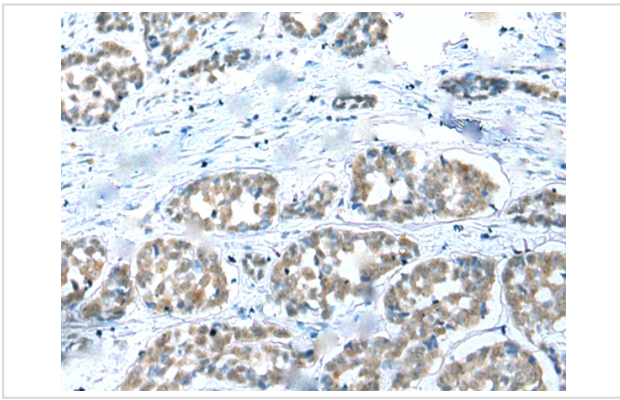
Application Details

Immunohistochemistry: 1:25-1:100

Images



Immunohistochemical analysis of paraffin-embedded Human prostate cancer tissue using #42937 at dilution 1/30.



Immunohistochemical analysis of paraffin-embedded Human esophagus cancer tissue using #42937 at dilution 1/30.

Background

COMMD6 belongs to a family of NF-kappa-B (see RELA; MIM 164014)-inhibiting proteins characterized by the presence of a COMM domain (see COMMD1; MIM 607238) (de Bie et al., 2006 [PubMed 16573520])

Note: This product is for in vitro research use only