

C4orf46 Antibody

Catalog No: #42940

Orders: order@signalwayantibody.comSupport: tech@signalwayantibody.com

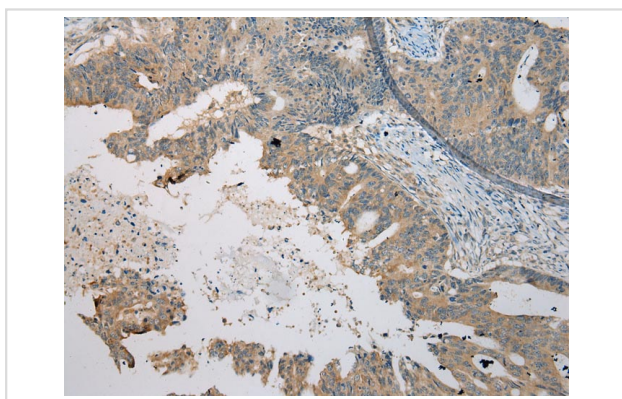
Description

Product Name	C4orf46 Antibody
Host Species	Rabbit
Clonality	Polyclonal
Purification	Antigen affinity purification.
Applications	IHC
Species Reactivity	Hu
Specificity	The antibody detects endogenous levels of total C4orf46 protein.
Immunogen Description	Full length fusion protein of human C4orf46
Target Name	C4orf46
Other Names	RCDG1
Accession No.	Swiss-Prot#: Q504U0 Gene ID: 201725
Uniprot	Q504U0
GeneID	201725;
Concentration	1mg/ml
Formulation	Rabbit IgG in pH7.4 PBS, 0.05% NaN ₃ , 40% Glycerol.
Storage	Store at -20°C

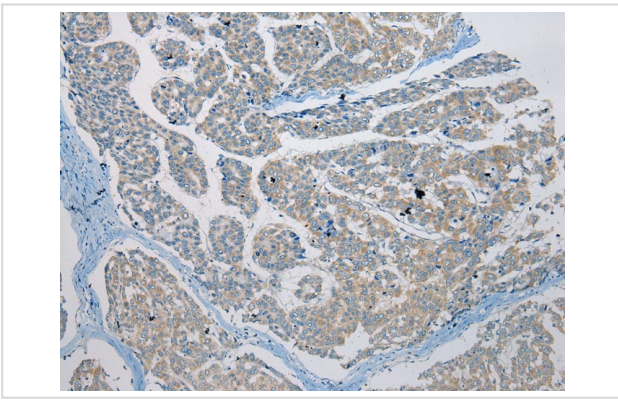
Application Details

Immunohistochemistry: 1:100-1:200

Images



Immunohistochemical analysis of paraffin-embedded Human Colorectal cancer tissue using #42940 at dilution 1/100,



Immunohistochemical analysis of paraffin-embedded Human Liver cancer tissue using #42940 at dilution 1/100,

Background

This gene encodes a small, conserved protein of unknown function that is expressed in a variety of tissues. There are pseudogenes for this gene on chromosomes 6, 8, 16, and X. Alternative splicing results in multiple transcript variants.?

Note: This product is for in vitro research use only