

XPR1 antibody

Catalog No: #22817

Orders: order@signalwayantibody.com

Support: tech@signalwayantibody.com

Description

Product Name	XPR1 antibody
Host Species	Rabbit
Clonality	Polyclonal
Purification	Purified by antigen-affinity chromatography.
Applications	WB IHC
Species Reactivity	Hu
Immunogen Type	Peptide
Immunogen Description	Synthetic peptide contain a sequence corresponding to a region within amino acids 1 and 15 of Human XPR1
Target Name	XPR1
Other Names	X3; SYG1; FLJ90308
Accession No.	Swiss-Prot:Q9UBH6Gene ID:9213
Uniprot	Q9UBH6
GeneID	9213;
Concentration	1mg/ml
Formulation	Supplied in 0.1M Tris-buffered saline with 10% Glycerol (pH7.0). 0.01% Thimerosal was added as a preservative.
Storage	Store at -20°C for long term preservation (recommended). Store at 4°C for short term use.

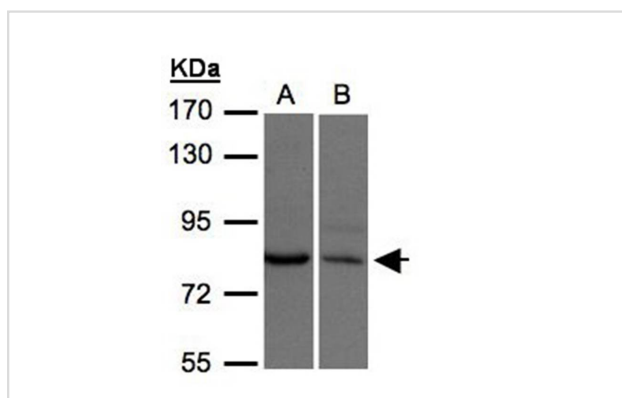
Application Details

Predicted MW: 82kd

Western blotting: 1:500-1:3000

Immunohistochemistry: 1:100-1:250

Images



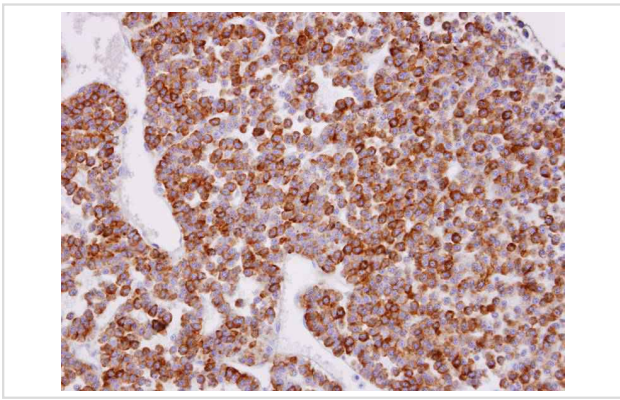
Sample(30 ug of whole cell lysate)

A: H1299

B: Hep G2

7.5% SDS PAGE

Primary antibody diluted at 1: 500



Immunohistochemical analysis of paraffin-embedded PITUITARY GLAND TUMOR, using XPR1 antibody at 1: 100 dilution.

Note: This product is for in vitro research use only