

CAPS2 Antibody

Catalog No: #42951

Orders: order@signalwayantibody.comSupport: tech@signalwayantibody.com

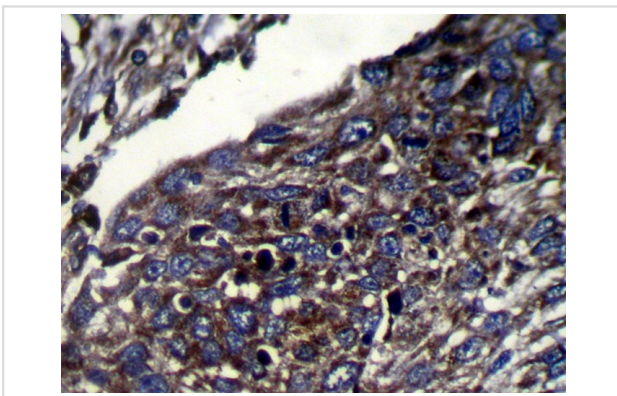
Description

Product Name	CAPS2 Antibody
Host Species	Rabbit
Clonality	Polyclonal
Purification	Antigen affinity purification.
Applications	IHC
Species Reactivity	Hu
Specificity	The antibody detects endogenous levels of total CAPS2 protein.
Immunogen Description	Fusion protein of human CAPS2
Target Name	CAPS2
Other Names	UG0636c06
Accession No.	Swiss-Prot#: Q9BXY5 Gene ID: 84698
Uniprot	Q9BXY5
GeneID	84698;
Concentration	0.8mg/ml
Formulation	Rabbit IgG in pH7.4 PBS, 0.05% NaN ₃ , 40% Glycerol.
Storage	Store at -20°C

Application Details

Immunohistochemistry: 1:100-1:200

Images



Immunohistochemical analysis of paraffin-embedded Human Esophagus cancer tissue using #42951 at dilution 1/100,

Background

Calcyphosine-2 is a calcium-binding protein with 2 EF-hand motifs (Wang et al., 2002 [PubMed 11846421]).

Note: This product is for in vitro research use only