

FKBP6 Antibody

Catalog No: #42955

Orders: order@signalwayantibody.comSupport: tech@signalwayantibody.com

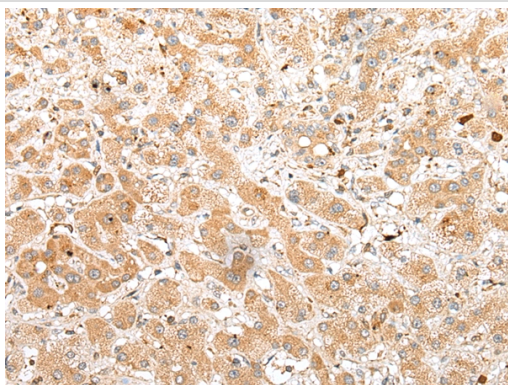
Description

Product Name	FKBP6 Antibody
Host Species	Rabbit
Clonality	Polyclonal
Purification	Antigen affinity purification.
Applications	IHC
Species Reactivity	Hu
Specificity	The antibody detects endogenous levels of total FKBP6 protein.
Immunogen Type	protein
Immunogen Description	Full length fusion protein of human FKBP6
Target Name	FKBP6
Other Names	FKBP36
Accession No.	Swiss-Prot#: O75344Gene ID: 8468
Uniprot	O75344
GeneID	8468;
Concentration	0.6mg/ml
Formulation	Rabbit IgG in pH7.4 PBS, 0.05% NaN ₃ , 40% Glycerol.
Storage	Store at -20°C

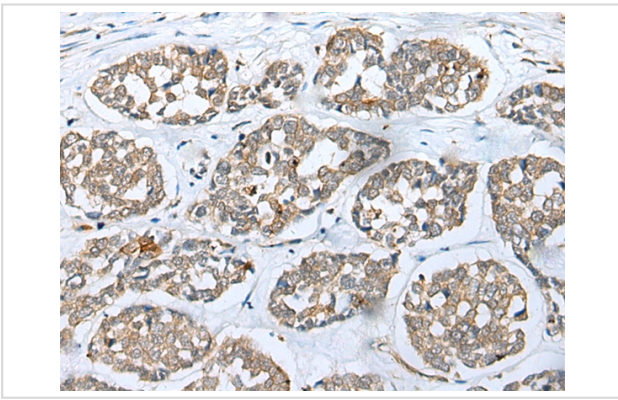
Application Details

Immunohistochemistry: 1:30-1:150

Images



Immunohistochemical analysis of paraffin-embedded Human liver cancer tissue using #42955 at dilution 1/25.



Immunohistochemical analysis of paraffin-embedded Human esophagus cancer tissue using #42955 at dilution 1/25.

Background

The protein encoded by this gene is a cis-trans peptidyl-prolyl isomerase that may function in immunoregulation and basic cellular processes involving protein folding and trafficking. This gene is located in a chromosomal region that is deleted in Williams-Beuren syndrome. Defects in this gene may cause male infertility. There are multiple pseudogenes for this gene located nearby on chromosome 7. Alternative splicing results in multiple transcript variants.

Note: This product is for in vitro research use only